

CATALOGUE OF MEMORIAL  
EXHIBITION OF PAINTINGS  
BY THE LATE  
JOHN WHITE ALEXANDER



DETROIT MUSEUM OF ART  
NOVEMBER, 1916

THE DETROIT MUSEUM OF  
ART MAKES GRATEFUL  
ACKNOWLEDGMENT TO  
THOSE WHO HAVE GENER-  
OUSLY LENT PAINTINGS  
FOR THIS EXHIBITION, AND  
TO MRS. ALEXANDER FOR  
HER VALUABLE CO-OPERA-  
TION. THE NAMES OF CON-  
TRIBUTORS APPEAR IN THE  
TEXT OF THE CATALOGUE.

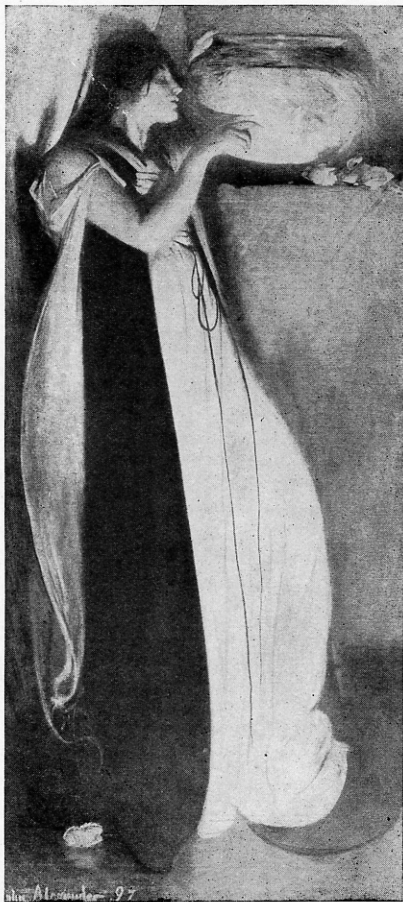
## JOHN WHITE ALEXANDER

Born Allegheny, Pennsylvania, October 7, 1856. Died New York City, May 31, 1915. Studied in Munich, Venice and Florence.

*Member:* Associate, 1901, Academician, 1902, and President from 1909, of the National Academy of Design, New York; New York Architectural League, 1901; Vice-President of National Society of Mural Painters, New York; President of National Institute of Arts and Letters; American Academy of Arts and Letters; National Society of Portrait Painters, New York; President of School Art League; President of MacDowell Club, New York; Society of Illustrators, New York (Honorary); American Institute of Architects (Honorary); Vice-President and Director of the American Federation of Arts; Société Nationale des Beaux-Arts, Paris; Société de Peintres et Sculpteurs, Paris; International Society of Sculptors, Painters and Gravers, London (Honorary); Royal Society of British Artists (Honorary); Munich Secession; Vienna Secession; Trustee of the American Fine Arts Society, the New York Public Library, and the Metropolitan Museum of Art.

*Awards:* Bronze medal, Munich Academy, 1880; Temple gold medal, 1897, and Lippincott prize, 1899, Pennsylvania Academy of the Fine Arts, Philadelphia; gold medal, Paris Exposition, 1900; gold medal, Pan-American Exposition, Buffalo, 1901; Carnegie prize, Society of American Artists, 1901; first Corcoran prize, Society of Washington Artists, 1903; gold medal, St. Louis Exposition, 1904; Chevalier Legion of Honor, 1901; first class medal, Carnegie Institute, Pittsburgh, 1911.

*Represented* in the permanent collections of the Luxembourg, Paris; Metropolitan Museum of Art, New York; The Corcoran Gallery of Art, Washington; Boston Museum of Fine Arts; Rhode Island School of Design, Providence; Wilstach Gallery, Philadelphia; Pennsylvania Academy of the Fine Arts; Cincinnati Museum; Carnegie Institute, Pittsburgh; St. Louis Museum; Art Institute of Chicago; Harvard University, Cambridge; Princeton University; Columbia University, New York; Wheaton Seminary, Norton, Mass.; Radcliffe College, Cambridge, Mass.; Mt. Holyoke (Mass.) College; Bowdoin College, Brunswick, Maine; National Gallery, Washington; Society of Fine Arts, Minneapolis; Library of Congress, Washington; Capitol, Harrisburg, Penna., etc., and also in many private collections.

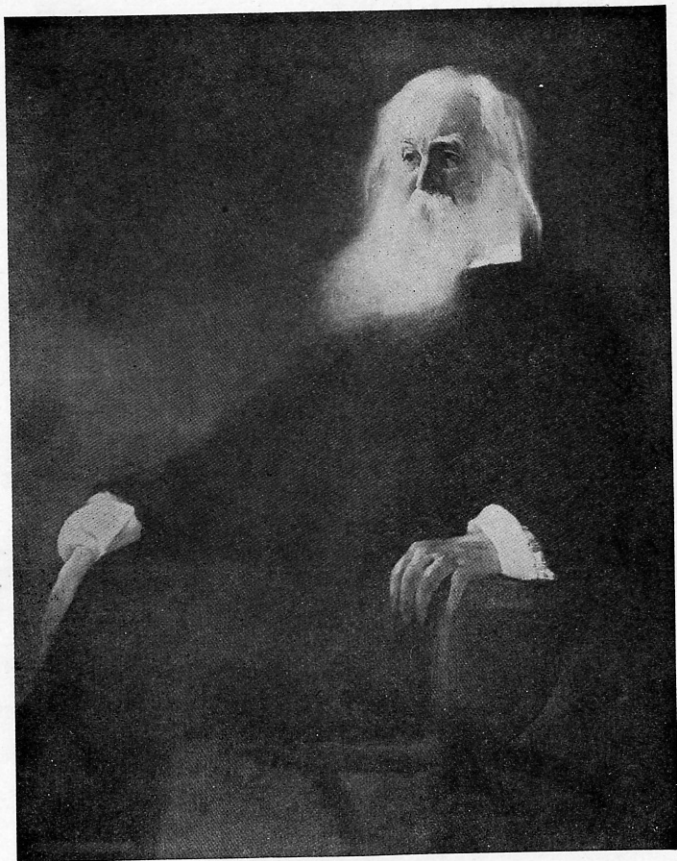


ISABELLA, OR THE POT OF BASIL

# CATALOGUE

---

- 1 Portrait of Walt Whitman.  
Lent by the Metropolitan Museum of Art, New York.
- 2 "Isabella or the Pot of Basil."  
Lent by the Boston Museum of Fine Arts.
- 3 Portrait of Miss Mary C. Wheeler.  
Lent by Miss Wheeler, Providence, R. I.
- 4 A Quiet Hour.  
Lent by the Pennsylvania Academy of the Fine Arts.
- 5 Portrait of Mrs. Wheaton.  
Lent by Wheaton College, Norton, Mass.
- 6 Phyllis.  
Lent by the City Art Museum, St. Louis.
- 7 Portrait of Helen Beatty.  
Lent by John W. Beatty, Esq.
- 8 Study Head of a Munich Peasant.  
Lent by Julius Rolshoven, Esq.
- 9 Sketch of Booth Tarkington.  
Lent by Quadrangle Club, Princeton, N. J.
- 10 The Mother.  
Lent by Estate of John W. Alexander.



COPYRIGHT BY THE DETROIT PUBLISHING CO.

PORTRAIT OF WALT WHITMAN

- 11 Landscape. (Cornish, N. H.)  
Lent by Estate of John W. Alexander.
- 12 Marine. (Moonlight.)  
Lent by Mrs. John W. Alexander.
- 13 The Tenth Muse.  
Lent by Mr. James W. Alexander.
- 14 On a Balcony.  
Lent by Mr. James W. Alexander.
- 15 The Gossip.  
Lent by Estate of John W. Alexander.
- 16 Landscape.  
Lent by Estate of John W. Alexander.
- 17 Joseph Jefferson as Bob Acres.  
Lent by Estate of John W. Alexander.
- 18 Peonies.  
Lent by Mrs. John W. Alexander.
- 19 Memories.  
Lent by Mrs. John W. Alexander.
- 20 Juliette.  
Lent by Estate of John W. Alexander.
- 21 The Black Cat.  
Lent by Mrs. John W. Alexander.



COPYRIGHT BY THE DETROIT PUBLISHING CO.

**PORTRAIT OF MRS. JOHN W. ALEXANDER**



22 Old Cole.

Lent by Estate of John W. Alexander.

23 The Glass Bowl.

Lent by Estate of John W. Alexander.

24 The Blue Bowl.

Lent by Estate of John W. Alexander.

25 The Green Gown.

Lent by Estate of John W. Alexander.

26 A Rose.

Lent by Estate of John W. Alexander.

27 Reflections.

Lent by Estate of John W. Alexander.

28 White Birches.

Lent by Miss Elizabeth Averell.

29 In the Orchard.

Lent by Mrs. John W. Alexander.

30 Flowers.

Lent by Estate of John W. Alexander.

31 Landscape.

Lent by Estate of John W. Alexander.

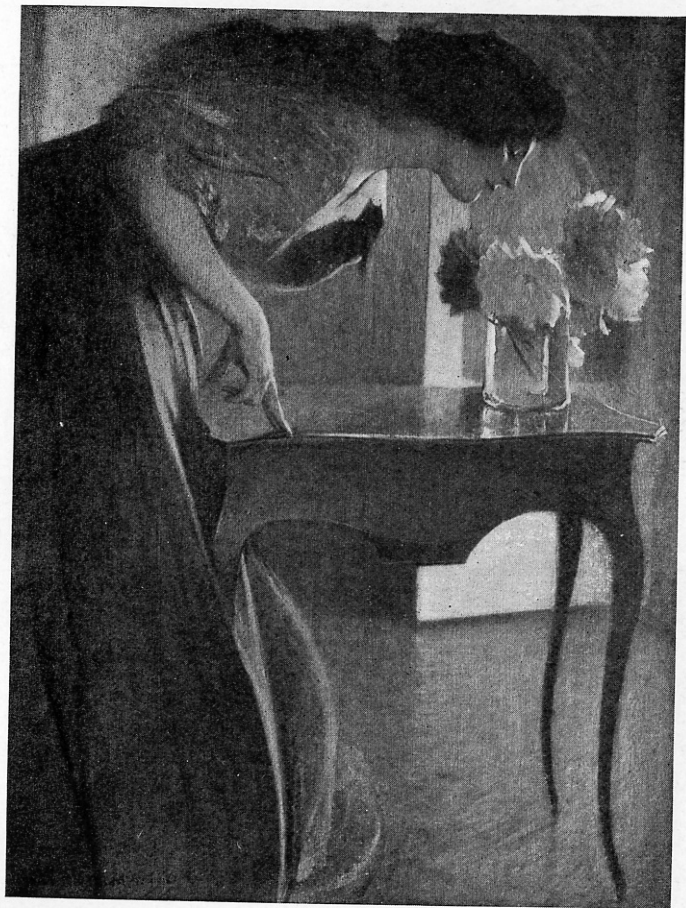
32 Birches. (Cornish, N. H.)

Lent by Mrs. A. G. Hoffman.



COPYRIGHT BY THE DETROIT PUBLISHING CO.

**PORTRAIT OF MRS. WHEATON**



PEONIES



COPYRIGHT BY THE DETROIT PUBLISHING CO.

## MEMORIES