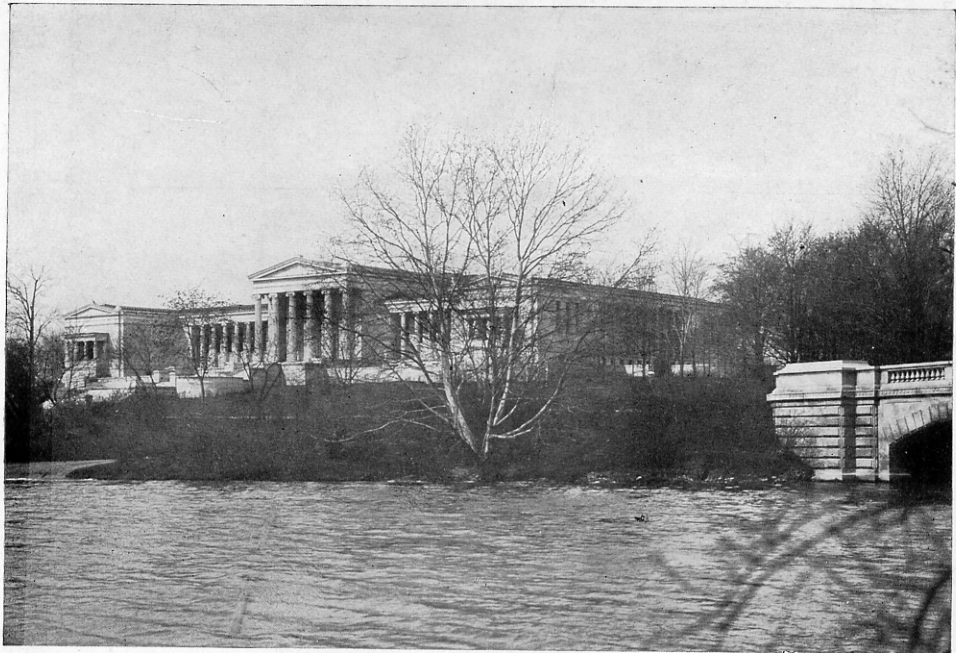


Catalogue of Selected Paintings
from the Albright Art Gallery
and a Collection of Recent Work
By British Artists

Detroit Museum of Art

January, 1916



ALBRIGHT ART GALLERY, BUFFALO

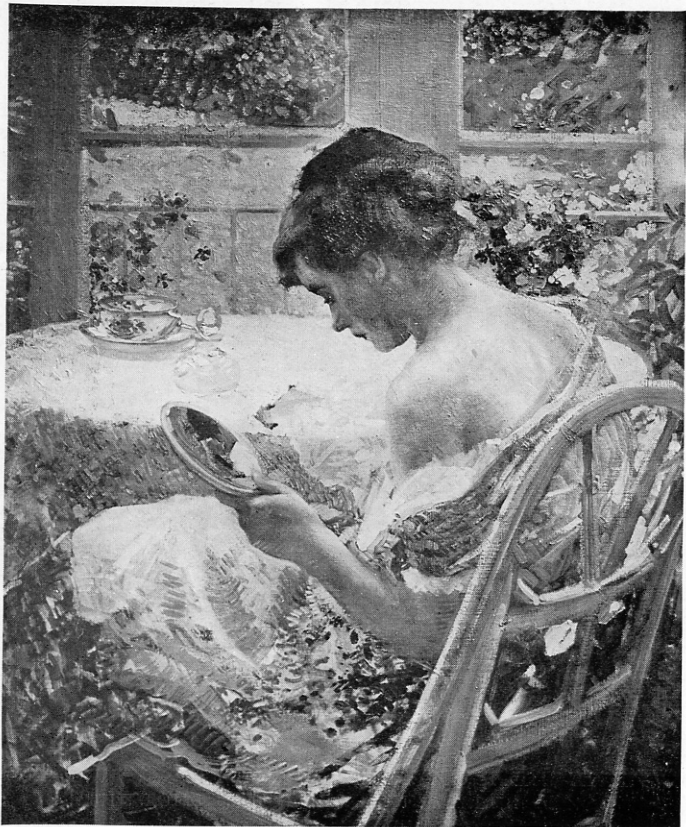
THE interchange of permanent collections between museums is an experiment, tried for the first time in this exchange of collections belonging to the Detroit Museum of Art and the Albright Art Gallery.

The Detroit Museum displays during the month of January thirty-four pictures which fairly represent the Buffalo collection; and a corresponding number of pictures from the Detroit Museum's permanent collection will be shown on the walls of the Albright Art Gallery.

The benefits of reciprocal exhibitions of this character cannot be overestimated. The people of Detroit and Buffalo will be able to compare the collections of their home museums with those of the museum of a neighboring city of corresponding size and wealth.

Both the Detroit Museum of Art and the Albright Art Gallery have developed important American sections in their permanent collections, and in the Buffalo collection it will be noted that there are examples of many of the painters represented in this museum. The Albright Art Gallery has also made purchases among the modern French, Scotch and German painters while the Detroit Museum of Art possesses a fine collection of paintings by the early Italian, Flemish and Dutch painters, the gift of the late James E. Scripps, a portion of which will be seen in Buffalo.

It will be of much interest to Detroiters to see the Buffalo possessions. It would be equally interesting to them, no doubt, to see their own permanent collection displayed on the walls of a beautiful temple of art like that of the Albright Art Gallery. If the citizens of Detroit could go to Buffalo and see their permanent collections of art in a proper setting, they would carry away a vision of what Detroit's collection will look like in the new museum which is to house it on Woodward Avenue, and it would do much to stimulate activity in the new Art Center project.



"THE TOILET," by RICHARD E. MILLER, A. N. A.
From the Permanent Collection of the Albright Art Gallery

Paintings from the Albright Art Gallery

CATALOGUE

FRANK W. BENSON, N. A., Boston, Mass. (American School.)

1. The Sisters.

Awarded Silver Medal, Pan-American Exposition, Buffalo, 1901; Gold Medal, Universal Exposition, St. Louis, 1904.

RALPH ALBERT BLAKELOCK, A. N. A. (American School.)

2. Autumn.

EMIL CARLSEN, N. A., New York, N. Y. (Danish-American School.)

3. Moonlight on the Kattegat.

4. The Beechwoods.

Lent by Willis O. Chapin, Esq., Buffalo, N. Y.

MAX CLARENBACH, Dusseldorf, Germany. (German School.)

5. Winter on the Erft.

CHARLES COTTET, Paris, France. (French School.)

6. Triptych—The Land of the Sea.

Original Study for the painting in the Musee du Luxembourg, Paris, France.

Center Panel: Repast of Leave Taking.

Left Panel: Those Who Go.

Right Panel: Those Who Remain.

HENRY GOLDEN DEARTH, N. A., New York, N. Y.
(American School.)

7. Gardenias.

CHARLES MELVILLE DEWEY, N. A., New York, N. Y.
(American School.)

8. The Grey Robe of Twilight.

Awarded Silver Medal, Universal Exposition, St.
Louis, 1904.

THOMAS W. DEWING, N. A., New York, N. Y. (Ameri-
can School.)

9. Lady with a Macaw.

PAUL DOUGHERTY, N. A., New York, N. Y. (American
School.)

10. A Freshening Gale.

Awarded Silver Medal, Carnegie Institute, Pittsburgh,
1912.

HENRI HARPIGNIES. (French School.)

11. Landscape.

Lent by George F. Rand, Esq., Buffalo, N. Y.

CHILDE HASSAM, N. A., New York, N. Y. (American
School.)

12. Church at Old Lyme.

CHARLES W. HAWTHORNE, N. A. (American School.)

13. The Family.

ROBERT HENRI, N. A., New York, N. Y. (American
School.)

14. Tam Gan.



"LADY WITH A MACAW," by THOMAS W. DEWING, N. A.
From the Permanent Collection of the Albright Art Gallery

EDWARD A. HORNEL, Kirkcudbright, Scotland.
(Scotch School.)

15. Easter Morning.

GEORGE INNESS, N. A. (American School, 1825-1894.)

16. The Coming Storm. (Dated, 1878.)

CHARLES EMILE JACQUE. (French School, 1813-1894.)

17. In Pasture.

KARL KUSTNER, Munich, Bavaria. (German School.)

18. The Poplars.

GASTON LA TOUCHE. (French School, 1854-1913.)

19. Vision Antique.

LEON AUGUSTIN L'HERMITTE, Paris, France. (French School.)

20. The Haymakers. (Dated, 1887.)

W. Y. MacGREGOR, R. S. A., Bridge of Allen, Scotland.
(Scotch School.)

21. The Cathedral, Durham.

EMILE RENE MENARD, Paris, France. (French School.)

22. Bucolique.

RICHARD E. MILLER, A. N. A., New York, N. Y.
(American School.)

23. The Toilet.

JEAN-FRANCOIS RAFFAELLI, Paris, France. (French School.)

24. La Porte St. Denis.

HENRY W. RANGER, N. A., New York, N. Y. (American School.)

25. A Group of Oaks.

EDWARD W. REDFIELD, N. A., Centre Bridge, Pa. (American School.)

26. The Laurel Brook.

Awarded Walter Lippincott Prize, Pennsylvania Academy of the Fine Arts, Philadelphia, 1912.

ROBERT REID, N. A. (American School.)

27. The Pink Carnation.

W. ELMER SCHOFIELD, N. A. (American School.)

28. Spring's Approach.

LUCIEN SIMON. (French School.)

29. Seminarists.

DWIGHT W. TRYON, N. A., New York, N. Y. (American School.)

30. An Evening in May.

HORATIO WALKER, N. A., New York, N. Y. (American School.)

31. Sheep Shearing.

J. ALDEN WEIR, N. A., New York, N. Y. (American School.)

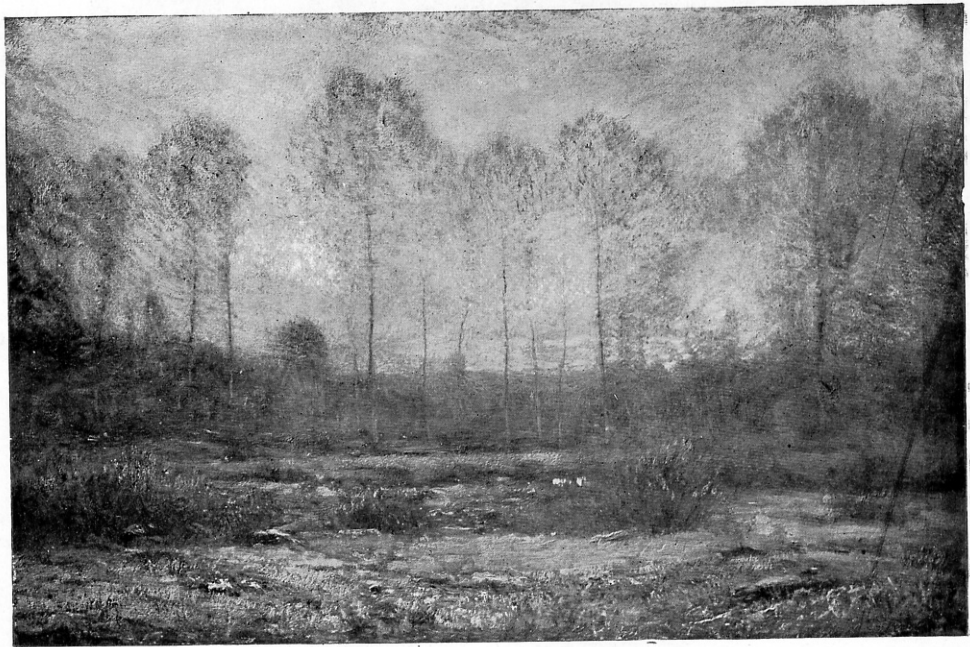
32. Early Morning.

ALEXANDER H. WYANT, N. A. (American School, 1836-1892.)

33. A Mountain Brook, Adirondacks.

HEINRICH ZUGEL, Munich, Bavaria. (German School.)

34. On the Highway.



COPYRIGHT BY THE DETROIT PUBLISHING CO.

"AN EVENING IN MAY," by DWIGHT W. TRYON, N. A.
From the Permanent Collection of the Albright Art Gallery

Recent Work by British Artists

Selected by Mr. Harrington Mann

CATALOGUE

T. AUSTIN BROWN.

35. The Sand Pitt.

Lent by the Goupil Galleries, New York.

F. C. B. CADELL.

26. Reflection.

37. Cecilia.

D. Y. CAMERON.

38. Old Inverlochy.

PHILIP CONNARD.

39. Jane Connard.

THOMAS DERRICK.

40. The Judgment of Paris.

R. GRENVILLE EVES.

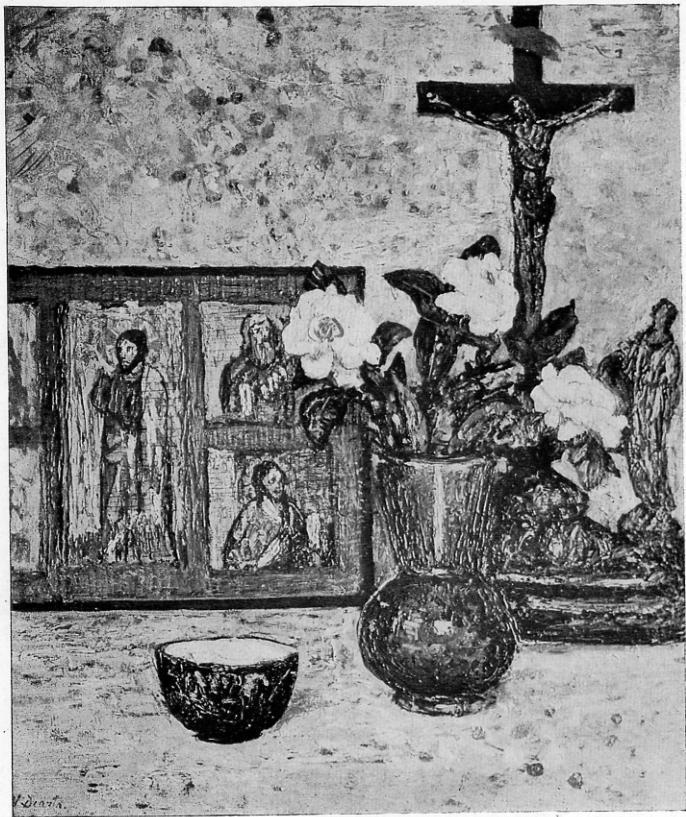
41. Right Honorable Sir C. C. Smith.

MAURICE GREIFFENHAGEN.

42. The Beggar Maid.

OLIVER HALL.

43. Villeneuve.



"GARDENIAS," by HENRY GOLDEN DEARTH, N. A.
From the Permanent Collection of the Albright Art Gallery

VEREKER M. HAMILTON.

- 44. Coq d'Or, Russian Ballet.
- 45. On an Island, Brittany.

ARCHIBALD S. HARTRICK.

- 46. Billy the Swineherd.

LILY BLATHERARCH HARTRICK.

- 47. Butterfly Orchid.

GERALD FESTUS KELLY.

- 48. Ma Thien Kin, in her best clothes.
- 49. Sibyl.

GEORGE WASHINGTON LAMBERT.

- 50. The Smile of Pan.
- 51. Study of a Head.
- 52. Study of a Head.

H. H. LATHANGUE.

- 53. Festa.
- 54. The Yoke.

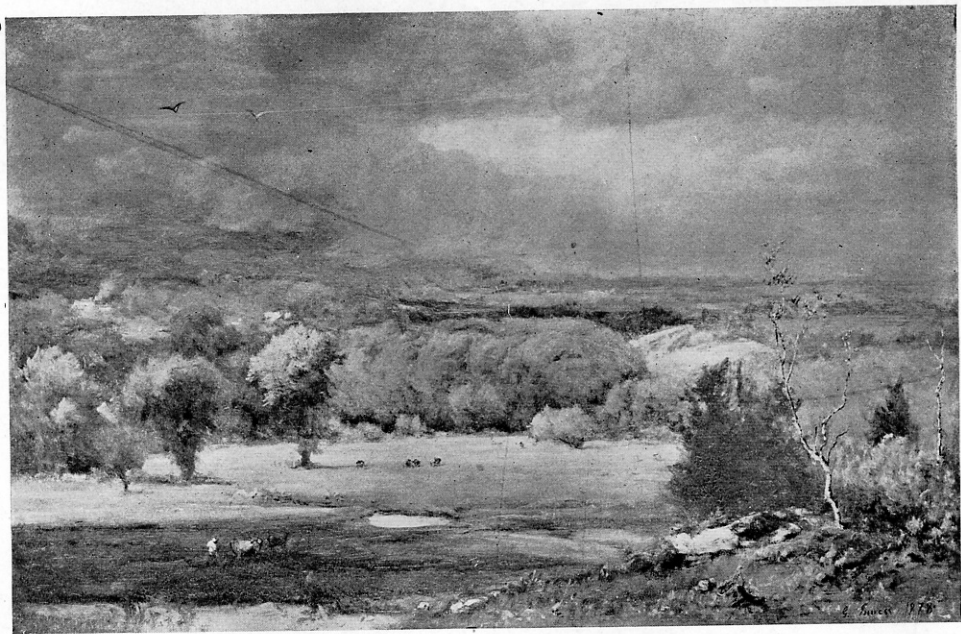
JOHN LAVERY.

- 55. Aida.

Lent by Mr. Charles W. Kransharr, New York.

MRS. D. MANN.

- 56. Flower Piece.
- 57. Flower Piece.
- 58. Flower Piece.



"THE COMING STORM," by GEORGE INNESS. N. A.
From the Permanent Collection of the Albright Art Gallery

HARRINGTON MANN.

- 59. A Little Bulgarian Girl.
- 60. Laughing Girl.
- 61. The Girl with the Mexican Hat.

FRED MAYOR.

- 62. Silver Clouds.
- 63. Port of Cassis.
- 64. The Blue Boat.
- 65. Summer.

AMBROSE McEVOY.

- 66. La Basquaise.

GERALD MOIRA.

- 67. The Crystal Vase.

MABEL NICHOLSON.

- 68. Nancy.
- 69. A Madeira Girl.

WILLIAM NICHOLSON.

- 70. Lizzie Warne.
- 71. Ginnie as Infanta.

JULIUS OLSSON.

- 72. Marine.

WILLIAM ORPEN.

- 73. Afternoon Rest.
- 74. Portrait of Miss Wilson.

WILLIAM B. E. RANKEN.

75. In the Garden, Trianon.

76. "Il pueut, il pleut, bergere, Ramenez vos moutons."

77. The Fountain of Koutchoukson, Bosphorus.

WALTER W. RUSSELL.

78. The Medway, Rochester.

CHARLES SIMS.

79. Landscape.

WILLIAM STRANG.

80. The Red Cloak.

ETHEL WALKER.

81. Pastoral, decoration.



TRIPTYCH—"THE LAND OF THE SEA,"

by CHARLES COTTET

From the Permanent Collection of the Albright Art Gallery