

AMERICAN ART INSTITUTIONS

Sup

THE SCARAB CLUB'S ANNUAL EXHIBITION OF PICTURES BY MICHIGAN ARTISTS



DETROIT
MUSEUM
OF ART
DEC. 1ST - 20TH
1915

List of Illustrations



18	The Bridge	<i>Franz Bischoff</i>
22	Crochet	<i>Myron Barlow</i>
30	Scituate-Twilight	<i>Frank Scott Clark</i>
42	The Drummer Boy	<i>Roy C. Gamble</i>
51	Corinne	<i>Joseph W. Gies</i>
62	Across the Sunlit Harbor, Me.	<i>W. A. Greason</i>
70	A Southern Moon	<i>George Hodges</i>
72	Portrait of the Dutch Pianist, Jan Sickness	<i>Paul E. Honore</i>
95	Portrait	<i>Percy Ives</i>
100	A Rainy Day—Fifth Avenue (etching)	<i>Charles B. King</i>
103	Portrait	<i>Roman Kryzanowski</i>
118	Early Autumn	<i>Arthur A. Marschner</i>
122	The Clouded Inscription	<i>John A. Morse</i>
136	Maine Headland	<i>Katherine McEwen</i>
138	Doctor Longyear	<i>Esther L. McGraw</i>
144	Phlox	<i>Gari Melchers</i>
148	A Lost Soul	<i>Alfred F. Nygard</i>
157	Work and Gossip	<i>Francis Petrus Paulus</i>
183	Signor Perugini in "The Yellow Jacket"	<i>J. H. Gardner Soper</i>
208	From the Scarabs' Window (etching)	<i>George A. True</i>
215	Bust of Marxhausen	<i>Edward V. Wagner</i>
237	An Interesting Story	<i>Charles E. Waltensperger</i>

The Scarab Club *of* *Detroit, Michigan*

THE Scarab Club had a modest and quite informal beginning. When after a lapse of years, a group of Detroit painters organized a local exhibition in 1910, the interest and patronage was such as to warrant making it an annual affair, and a few of the painters and laymen most interested, realizing the mutual helpfulness of having the painters of Detroit associated in a social way, leased the third floor of a business block, and did the necessary labor with their own hands to make the room a suitable meeting place. The first year there were only a dozen members, the meetings were all informal, there was no constitution or by-laws, and a president, secretary and treasurer constituted the official board. The latter sometimes had difficulty in making the nominal dues pay the rent. But there was much good fellowship, and the Saturday evening work sessions which had been established afforded a bond to keep the artist members together and maintain their interest.

Two subsequent exhibitions held at the Museum in 1911 and 1912, under the name of the Hopkin Club were equally successful, and in the meantime the Scarab Club had added many new members. In May, 1913, a constitution and by-laws were adopted. The objects of the club as recited in the constitution are, "To promote the mutual acquaintance of art lovers and art workers; to stimulate and guide toward practical expression the artistic sense of the people of Detroit; and to advance the knowledge and love of the fine arts in every possible manner; to maintain a club house for entertainment and social purposes, as well as to provide working and exhibition facilities for the artist members."

Associate or non-working members were provided for under this constitution, and in spite of the increased number, the same fine club spirit prevailed.

In the summer of 1914 the club moved into more commodious quarters at 10 Witherell Street, and last year the fourth exhibition was held. From a group exhibition of a few leading men painters, the scope of the exhibit was broadened to embrace the entire coterie of Michigan painters, including those living abroad, and prizes generously donated by Club members and their friends were awarded. Unlike previous exhibitions, the fourth exhibition was held under the name of the Scarab Club. A competent jury was selected to pass upon the works submitted and to award the prizes.

Prizes

The Scarab Club first prize of \$100, second prize of \$50, and third prize of \$25, will be awarded for the three best pictures in the exhibition by resident Michigan artists regardless of subject or medium. These prizes were contributed by Messrs. D. M. Ferry, Jr., Henry G. Stevens, William P. Stevens, Ralph H. Booth and R. H. Webber.

A Hopkin Memorial first prize of \$75 and second prize of \$25 will be awarded for the best paintings in oil, painted in 1915 by resident artists of Detroit. These prizes are contributed by Mr. Wm. C. Weber.

The Herman Rolshoven prize of \$50 will be awarded for the best painting of a figure in oil. The Julius Rolshoven prize of \$25 will be awarded for the best painting of a head in oil. The Rolshoven prizes will be awarded by vote of the Scarab Club, and are open to resident Michigan artists.

The Jere C. Hutchins prize of \$25 will be awarded for the best etching of any subject either in color or black and white by a member of the Scarab Club.

No work will receive more than one prize, although one artist may compete for any or all awards. The Juries of Award reserve the right to withhold any of the above prizes.

The Scarab Club acknowledges its indebtedness to the generous contributors of prizes and also to the Detroit Museum of Art, where the collection is shown.

THE ARTS COMMITTEE:

JOSEPH W. GIES, Chairman.

MYRON BARLOW

CHARLES B. KING

ROY GAMBLE

FRANCIS P. PAULUS

JURY OF AWARDS:

MYRON BARLOW

FRANCIS P. PAULUS

Pictures marked * are not entered in competitions.

For information regarding prices inquire of Miss Holt in Gallery VI, or at the office.



144 *Phlox
Gari Melchers

Officers and Directors

JOSEPH W. GIES, President
FRANK SCOTT CLARK, Vice-President
RUSSELL H. LEGGE, Secretary
A. E. PETERS, Treasurer

HARRY V. WOODHOUSE
JOHN A. MORSE

CHAS. B. KING
CLYDE H. BURROUGHS

FRANCIS P. PAULUS

Honorary Members

D. M. FERRY, Jr.

WM. C. WEBER

JULIUS ROLSHOVEN

Active Members

GEO. ARMSTRONG
JAMES S. BOOTH
CLYDE H. BURROUGHS
FRANK SCOTT CLARK
ROY C. GAMBLE
W. GREASON
DAVID E. HEINEMAN
ARTHUR JAEGER
ALBERT KAHN
JAS. L. KRAEMER
S. M. LEWIS
ROY MARSHALL
G. A. MUELLER
FRANCIS P. PAULUS
GLENN T. PHILLIPS
BERTHOLD SEIFFERT
L. CLYDE SMITH
GEO. A. TRUE
CHAS. WALTENSBERGER

MYRON BARLOW
HORACE S. BOUTELL
MARCUS R. BURROWES
CHAS. H. CULVER
JOS. W. GIES
GEO. T. HAMILTON
PAUL E. HONORE
FREDERICK HUETWOHL
CHAS. B. KING
RUSSELL H. LEGGE
WALTER H. LINSSELL
J. A. MORSE
A. F. NYGARD
A. E. PETERS
FRED W. RYPSAM
IVAN SWIFT
BURT R. THOMAS
HARRY WALBRIDGE
HARRY V. WOODHOUSE

Associate Members

JAS. D. JEROME

HENRY P. WILLIAMS

HENRY G. STEVENS



22 *Crochet (*Loaned*)
Myron Barlow

Sensall Pitts.
John P. Vicker

Catalogue

ORVILLE S. ALLEN

- 1*Portrait of Artist's Brother
- 2*Margery



IRVING R. BACON

- 3 A Day Off
- 4 Old Ferry at Chioggia
- 5 A Peasant Hop
- 6 Drying the Nets—Chioggia
- 7 Winter

ERNEST HARRISON BARNES

- 8 Moonlight
- 9 Autumn Landscape
- 10 The River

CARL BENDER

- 11 Landscape
- 12 At The Folk Dance

GERRIT A. BENEKER

- 13*Little Antone
- 14*Still Life—Copper and Brass
- 15*The Provincetown Church
- 16*The Provincetown Packet

ARTHUR BEYREUTHER

- 17 Study (head)

FRANZ A. BISCHOFF

- 18*The Bridge
- 19*Midday (Canyon) S. California
- 20*Fisher Fleet, San Pedro Harbor, S. California

MYRON BARLOW

- 21*Winding the Skein (*Loaned by Mr. David Gray*)
- 22*Crochet (*Loaned*)
- 23 Quiet Moments (*Loaned by Mr. Paul Gray*)

ELIZABETH PALMER BRADFIELD

- 24 Junior Joy, son of Henry B. Joy, Esq.
- 25 Alpheus Barbour, son of William T. Barbour, Esq.
- 26 Peggy



157 *Work and Gossip
Francis Petrus Paulus

VINCENT V. CHALMERS

- 27 Late Autumn
- 28 Autumn
- 29 October Landscape

FRANK SCOTT CLARK

- 30 Scituate-Twilight
- 31 The North Country
- 32 Golden Sunset

il.

F. S. CHURCH

- 33*Swans

GEORGE C. FUNK

- 34 The Old Swimming Pool
- 35 The Old Scow
- 36 The Louvre on the river Seine
- 37 Spring
- 38 Bird's-eye view Woodward Avenue, looking north
- 39 Street Scene (evening)
- 40 Writing Home
- 41 In the Park



51 Corinne
Joseph W. Gies

~~A~~ ROY C. GAMBLE

- 42 The Drummer Boy
43 Portrait: Mrs. Piquette Mitchell
44 The Nut Gatherers *2*
45 Portrait: Miss Adelaide Casgrain
46 Old Paris
47 The Old Canal (Amsterdam)
48 Morning Scrubbing Down (Antwerp)
49 Portrait of Walter Homer, Jr., and Edward Eugene
Linsell

~~A~~ JOSEPH W. GIES

- 50 On the Cliffs *2*
51 Corinne
California Sketches
52 A Rocky Coast
53 Cypress Trees, Point Lobus, California
54 The Desert Ranch
55 Carmel Shore
56 The Little Red House, Carmel, California
57 Under the Bridge, South Pasadena, California

~~A~~ BETSY GRAVES

- 58 Mrs. Nelson Whittemore

✓ ✱ W. GREASON S

- 59 The Rising Moon, Marne
- 60 Portrait of Mr. Alexander Wood
- 61 The Red Maple
- 62 Across the Sunlit Harbor, Me.

ROBERT A. HERZBERG

- 63 Summer
- 64 Clear Day
- 65 Detroit Yacht Club
- 66 Sunset
- 67 Grey Day
- 68 The Boat Club
- 69 Behind the Scenes

GEORGE S. HODGES S

- 70 A Southern Moon

MRS. ETHEL HONORE

- 71 Portrait Sketch

✓ ✱ PAUL HONORE S

- 72 Portrait of the Dutch Pianist, Jan Sickness
- 73 Morning in the Woods
- 74 The Dealer
- 75 Morning Glow
- 76 Morning Fog on River
- 77 Still Life



183 *Signor Perugini in "The Yellow Jacket"

J. H. Gardner Soper

EDITH HAWORTH

- 78*Birthday Party
- 79*The Bathers
- 80*Happy Children
- 81*In Gloucester Harbor
- 82*One Summer Day
- 83*Lake at Aix les Bains
- 84*Filmore St. Gate, San Francisco Fair
- 85*Beech at Bass Rocks
- 86*Children at Play
- 87*At Gloucester

ALICE HUNT

- 88 Rio Albrizzi
- 89 Clovelly
- 90 Villa Stoddard

ALFRED HUTTY

- 91*Melting Snow
- 92*Brook in December
- 93*Woods in Winter

J ~~*~~

PERCY IVES '2

- 94 In Half Shadow
- 95 Portrait

ARTHUR L. JAEGER

- 96 Summer Days
97 Terrace Sun Bath

CHARLES B. KING

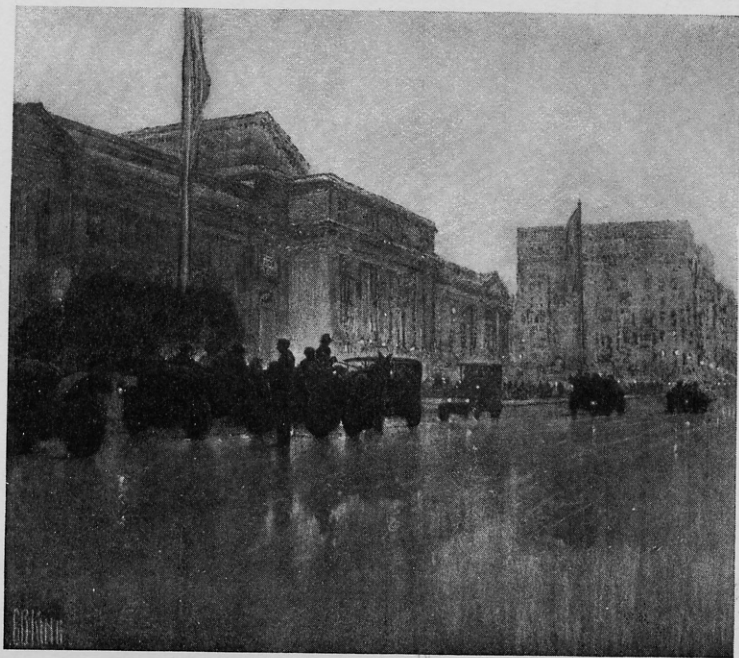
- 98 Palatzzo, Widman, (dry point) u
99 Evening, Longpre, (etching)
100 A Rainy Day, Fifth Avenue, (etching)
101 "Somewhere in France" (etching)
102 "Prunella," Second Act

 ROMAN KRYZANOWSKY u

- 103 Portrait
104 Landscape
105 Landscape
106 Grand Circus Park
107 Sunshine

H. M. KURTZWORTH

- 108 Episode No. 1
109 Episode No. 2
110 A Bridge at Evening (Xylograph)
111 Mood Reminiscent (Xylograph)
112 Mood Subtle (Pastel)
113 Mood Quiescent (Pastel)



100 A Rainy Day—Fifth Avenue (etching)
Charles B. King

MARIAN V. LOUD

- 114 Sketch—Gloucester
115 Sketch—Rocky Neck



ARTHUR A. MARSCHNER

- 116 Nocturne, Green and Blue
117 October
118 Early Autumn
119 The Faded Leaves
120 Nocturne, Blue and Rose
121 The Lake

2



J. A. MORSE

- 122 The Clouded Inscription
123 Etching
124 Etching
125 Etching (The Street of Mystery)
126 Monoprint
127 Etching
128 Etching
129 Etching
130 The Black Hat (dry point)
131 Hotel Tuller Entrance (etching)
132 The Fortune Teller (dry point)

2

CLARA McCLEAN

- 133 Portrait, Dr. S. N. McClean



KATHERINE McEWEN

- 134 Sea-Gulls
- 135 Afternoon
- 136 Maine Headland
- 137 The Capture

il

ESTHER L. McGRAW

- 138 Doctor Longyear
- 139 Sketch
- 140 Sketch
- 141 Autumn

il

GARI MELCHERS

- 142*The Letter (*Loaned by Mrs. Edw. C. Walker*)
- 143*July Flowers
- 144*Phlox

il

FLOYD S. NIXON

- 145 Early Morning
- 146 Autumn
- 147 Evening

ALFRED F. NYGARD

- 148 A Lost Soul

il

ELSIE MARIA ORLEMAN

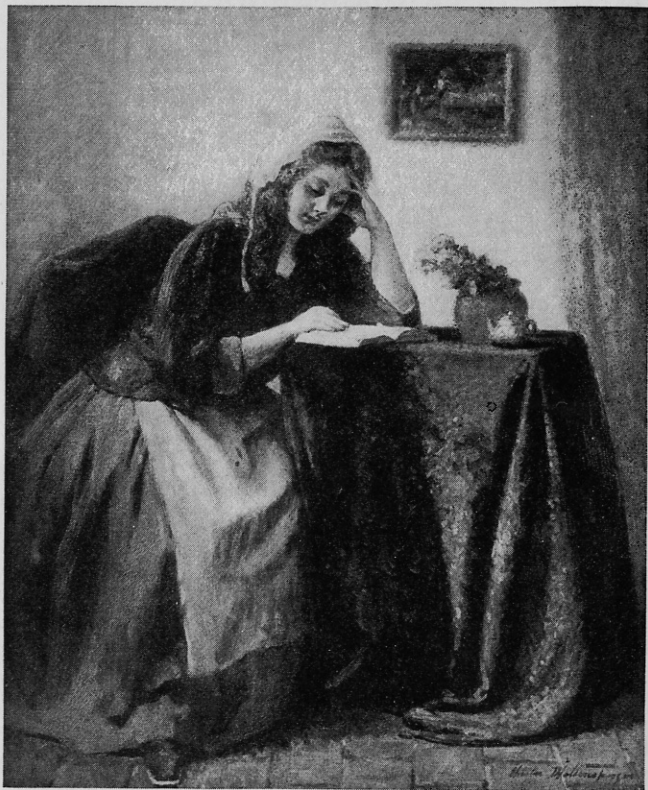
- 149 The Pulque Vendor (etching)
150 The Visitor

FRANCIS PETRUS PAULUS 2

- 151*The Old Corridor
152*Tranquillity
153*A Bouquet of Color
154*Venetian Market
155*The Red Buoy
156*Dortrecht, Holland
157*Work and Gossip
158*Albert Gilbert R. A. M V O
159*Mother of Pearl
160*Under the Trees
161*Along the Guidecca, Venice (etching)
162*The Old Bridge—Bruges (colored etching)
163*Fish Market of Bruges (colored etching)
164*Robert Hopkin (etching)
165*"The Cartoonist," Tom May

HUGO D. POHL

- 166*Long's Peak, Colorado
167*In the Rockies of Colorado



237 An Interesting Story

Chas. E. Waltensperger

VICTOR J. RHODES

168 The Marsh

JULIUS ROLSHOVEN

169*The Girl at the Loom (*Pastel*)

170*Late Evening

171*Memorizing

172*Repose (*Pastel*)

WILL G. RODEMAN

173 Jefferson Avenue

174 Pensive Mood

EDMUND ROLFE

175*Winter in the Deep Woods

GUY ROWE

176 August Landscape

177 Portrait of My Mother

FRED A. SCHNAPLE

178 Moonrise

BERTHOLD SEIFFERT

- 179 Golden Glow
- 180 Posies
- 181 November Day
- 182 Sweet Memories

J. H. GARDNER SOPER ²

- 183*Signor Perugini in "The Yellow Jacket"



BARTHOLOMEW SPORER

- 184 Interior of a Hall
- 185 Summer Morning—Landscape
- 186 The Roadway
- 187 October, Edge of Woods
- 188 Landscape—Summer Afternoon

CARL SPRINGER

- 189 Winter Stream
- 190 Brevort Lake
- 191 Autumn Thicket

JOHN STOLT

- 192 Autumn
- 193 Meadow Brook
- 194 Pines

GEORGE W. STYLES

195 October

IVAN SWIFT

- 196 Home of the Sea-Gull
197 Wet Days in Waterford
198 Spring Winds
199 Plain Brick on a Side Street
200 Palmer Woods

VERA THATCHER

201 Resting Faun

A. L. THORN

- 202 Seated Figure
203 Nude
204 Head
205 Girl in Blue
206 Girl in Blue

GEORGE A. TRUE

- 207 The Orchard (etching)
208 From the Scarabs' Window (etching)
209 Study (etching)
210 Beech Tree (etching)
211 The River (etching)
212 The Sand Schooner (etching)
213 The Elevator (etching)
214 Church of Our Father (etching)

EDWARD V. WAGNER

- 215 Bust of Marxhausen
216 Chrysanthemums
217 Trout and Mackerel
218 Bust of Mark Twain
219 Bust of Tennyson

T. GILBERT WHITE

- 220*Just Kid
221*De Bussy Nocturne



ARCH P. WIGLE

- 222 Dawn
223 Reflections
224 Early Morn
225 Harmony
226 The Passing Storm (sketch)
227 Perfect Day

M. C. WILBY

- 228*Portrait Sketch for Cover Design
229*Portrait Sketch
230*Portrait Sketch
231*Portrait Sketch for Cover Design

MILDRED E. WILLIAMS

232 June Fields



CHARLES E. WALTENSPERGER

233 An Early Lesson

234 By the Window

235 Summer Roses


236 Mother Joy

237 An Interesting Story

238 The Reader

EUSTACE P. ZIEGLER

239*The Abandoned Fold



FREDERICK A. ZIMMERMAN

240 On the Beach—California

241 Mission Capistrano—California

242 Autumn—Belle Isle

HOMER WARREN & COMPANY

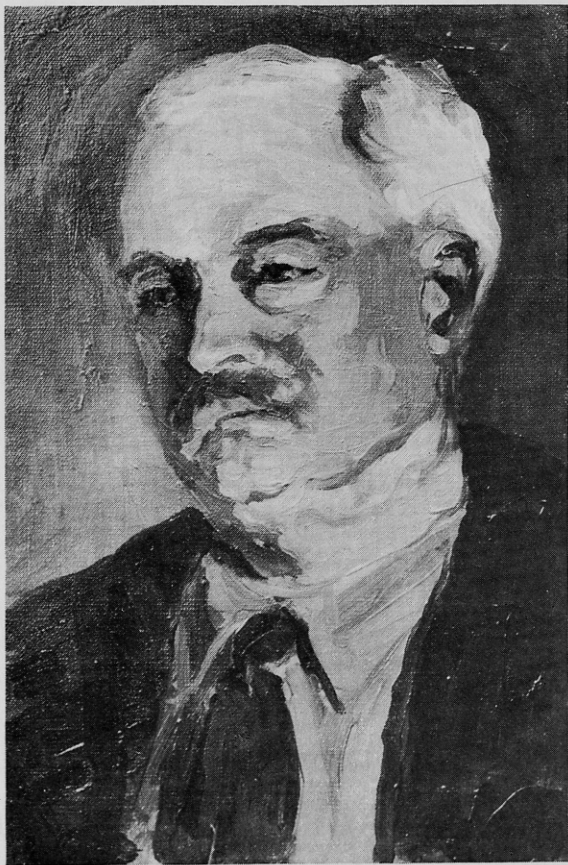
REAL ESTATE
RESIDENCE PROPERTY
CENTRAL PROPERTY
STORES
FACTORIES
MORTGAGES
APPRAISALS
RENTALS
COLLECTIONS

INSURANCE

FIRE
AUTOMOBILE
LIABILITY
COMPENSATION
BURGLARY
PLATE GLASS
HEALTH
ACCIDENT
BONDS

1227 CHAMBER OF COMMERCE

TELEPHONE MAIN 6406



138 Doctor Longyear

Esther L. McGraw



39 Scituate-Twilight
Frank Scott Clark



El Roi-Tan
Perfect Cigar

52 SIZES

John T. Woodhouse & Co.

Distributors



42 The Drummer Boy
Roy C. Gamble

JOHN HANNA

(Formerly of JAS. E. HANNA BROS.)

PICTURE AND MIRROR FRAMES OF DISTINCTIVE MERIT



REGILDING AND REPAIRING
ANTIQUE AND COLOR EFFECTS
ON FRAMES, FURNITURE, LAMP
STANDARDS AND
STATUARY



264 - 266 Randolph Street

Phone Cad. 4322

WE ARE NOW BUILDERS OF FINE RESIDENCES AND HAVE ALWAYS TRIED TO ADD THE REFINEMENT OF GOOD WORKMANSHIP TO THE HIGH QUALITY OF DESIGN PLANNED BY THE ARCHITECTS AND OWNERS. WE HAVE ADDED A DECORATIVE STUDIO TO OUR BUILDING DEPARTMENT WHICH WILL SOON BE OPEN TO THE PUBLIC, WHERE WE WILL SHOW FABRICS, WALL HANGINGS AND PAPERS, SPECIAL FURNITURE AND FITMENTS. AFTER STUDYING EACH DECORATIVE PROBLEM WE WILL GIVE SUGGESTIONS, ALWAYS LOOKING FOR ARCHITECTURAL

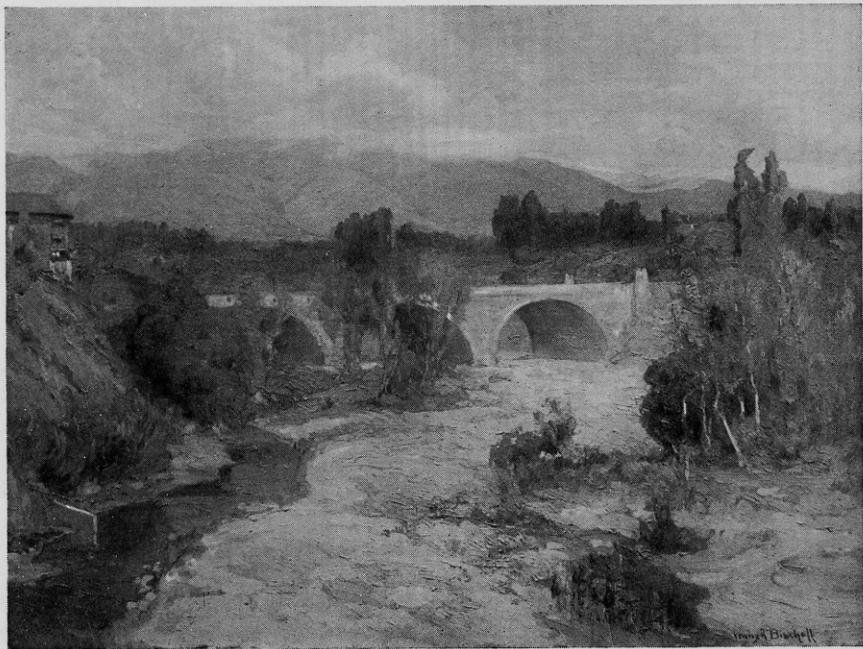
OPPORTUNITIES AND ALWAYS REMEMBERING THE PERSONALITY OF THE CLIENT AND THE FUNDAMENTAL LAWS OF GOOD TASTE. GOOD TASTE—THAT IS THE FITNESS OF THINGS IN THEIR PLACES. WE WILL ALWAYS STUDY TO FIND THE VALUE AND IMPORTANCE OF ENVIRONMENTAL DECORATION, TRIM, FIT AND IN ITS PLACE, MAKING ITSELF FELT—OF DECORATIONS AND FURNISHINGS WHICH WILL TRULY DECORATE AND WHICH WILL TRULY FURNISH IN THE BEST SENSE OF BOTH OF THESE MUCH MISUSED WORDS

LINSELL COMPANY

Studios: Woodward at Sproat St.

Factories and Building Departments:

370-390 Fort Street West



18 *The Bridge

Franz A. Bischoff



THE DETROIT SCHOOL
OF DESIGN. CORNER
JEFFERSON AVENUE AND
RIVARD. FOR INFORMA-
TION IN REGARD TO
COURSES OF STUDY, TELE-
PHONE CHERRY 1906. NEW
STUDENTS MAY REGISTER
AT ANY TIME. YOU ARE
INVITED TO VISIT THE
CLASSES.





136 Maine Headland

Katherine McEwen

FRAMING

THE value of the right kind of framing cannot be over-estimated. It is the final note of harmony to your picture. A visit to our galleries will help to secure that kind.

203
Washington
Arcade

Detroit
Photographic
Company

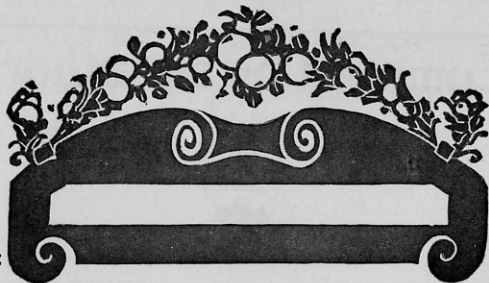
D.J. Healy SHOPS

IMPORTERS

ART TREASURES

Exceptional Novelties For Gifts

222 - 228 Woodward Avenue

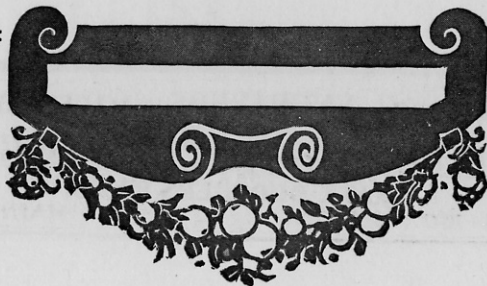


THE World's Choicest Products
from Orchard, Farm and
Garden received daily. Get
your order in early for your
Christmas Baskets, and have
them delivered fresh and beau-
tiful the day you want them.

==== CHERRY 3300 =====

EDWARD NEUMANN

Broadway Market



A Comment by an Authority



November 26th,
1915.

Detroit Photo Engraving Co.,
154 Fort St. West,
Detroit, Mich.

Gentlemen:

I have carefully examined the Engravings, which reproduce the Paintings illustrated in this Catalog, and considering the time handicap under which you have had to work must say, they are excellent examples of photo engraving - quite in keeping with your usual high standard.

Very truly yours,

R. H. Legge
Secretary.

ARTISTS ENGRAVERS ILLUSTRATORS
DETROIT PHOTO ENGRAVING CO.
KATZ BROTHERS PROPS.
154-160 FORT ST. W. MAIN 4515



118 Early Autumn
Arthur A. Marschner

Beltramini & Rush

WOODWARD AVENUE, CORNER ELIZABETH STREET
CATERERS *and* RESTAURANTEURS



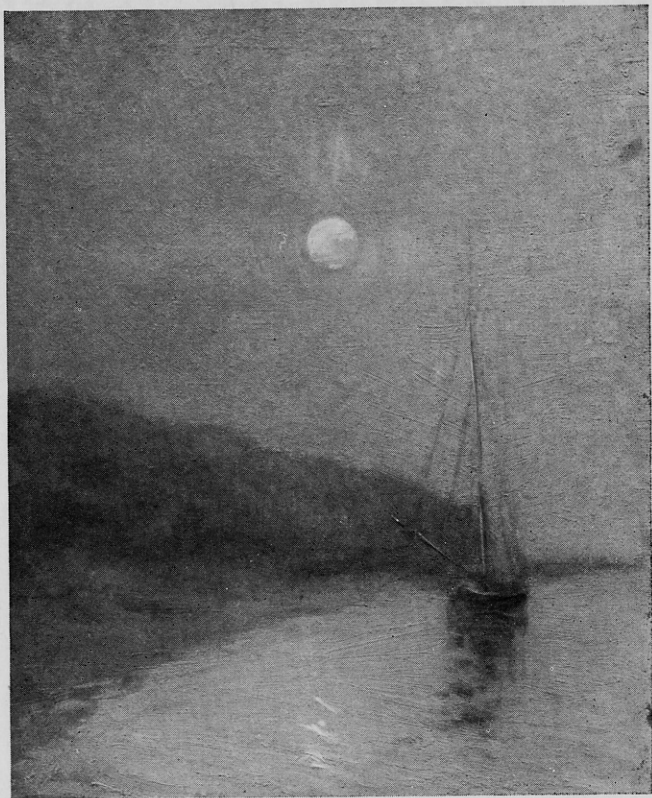
2 STORES—

292 WOODWARD AVENUE

1631 WOODWARD AVENUE

Our new store will be opened January 3rd, 1916





70 A Southern Moon
George S. Hodges

LETTERHEADS
WEDDING INVITATIONS

PERSONAL
STATIONERY

■
C. M. HARDY CO.

ENGRAVERS
PRINTERS
EMBOSSERS

Makers of
QUALITY EMBOSSED
STATIONERY

18 JOHN R STREET
Phone Cherry 2910
DETROIT

■
BUSINESS AND WEDDING
ANNOUNCEMENTS

AT HOME, CALLING AND
GREETING CARDS, ETC.



62 Across the Sunlit Harbor, Port Clyde, Me.

W. Greason

BLOME BROS. CO.

3 7 4 W O O D W A R D A V E N U E

See our complete line of Artist materials: Paints, Brushes, Canvas, Easels, Palettes, Stretchers—Best Quality, Lowest Prices.

ARTISTIC PICTURE FRAMING

A T M O D E R A T E P R I C E S

Dennen's Book Shop

BOOK SERVICE

We will deliver books to your address and charge them to your account. We will fill your orders by phone for any of the New and Popular Books.

PHONE OR WRITE YOUR REQUIREMENTS TO US

19 EAST GRAND RIVER AVENUE

TELEPHONE CADILLAC 4375



SCHOOL of FINE ARTS

DETROIT

Independent and progressive. Thorough training in Drawing and Painting from Life; Illustration; Composition. Limited students' list. Illustrated Catalog sent upon request.

JOHN P. WICKER, Director
Fine Arts Building
DETROIT, MICH.

RIEGEL'S HAIR SHOP

Successful Scalp Treating

MANICURING, SHAMPOOING, HAIR DRESSING
CHILDREN'S HAIR CUTTING. MANUFACTURING OF HAIR
GOODS. CHIROPODIST AND FOOT SPECIALISTS

Phone Cadillac 2046

Madison Hotel Basement

Cor. Madison Ave. and Grand River East

BOOK AND ART EXCHANGE

B. F. FAY, Proprietor

203 BOWLES BUILDING

N. E. Corner Grand River Avenue and Griswold Street

Artistic line of Christmas and New Year Cards and Calendars
Refined and Up-Lifting Sentiments. Pictures and Artistic Framing

We invite an early inspection.

OPEN 9 A. M. TO 5 P. M.



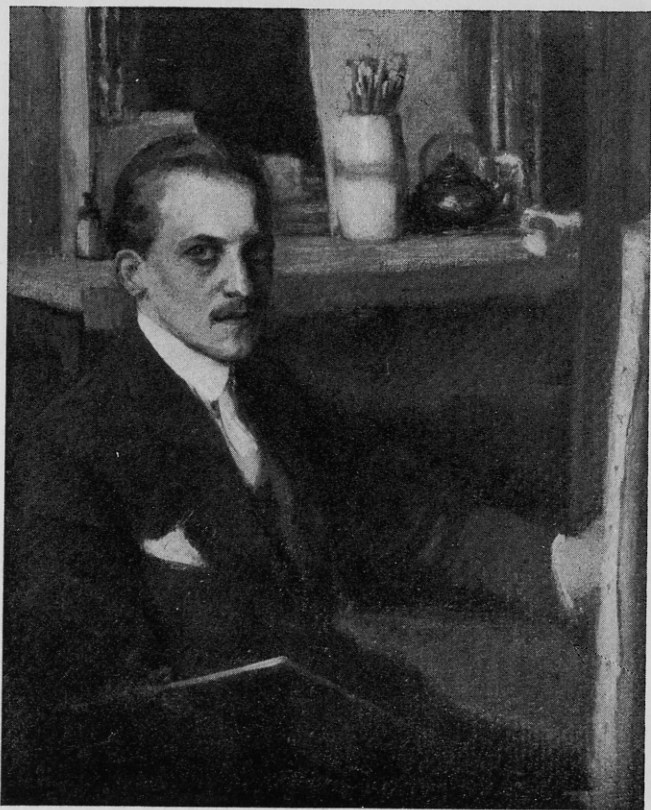
TO OBTAIN THE FINER EFFECTS IN PRINTING; TO ENGAGE THE SKILL NECESSARY TO INDICATE REFINEMENT AND TASTE, LEAVING

THE IMPRESSION OF SINCERITY, HUMOR, ODDITY, OR WHATEVER THE TEXT REQUIRES, YOU MUST ENGAGE THE PRINTER WHO KNOWS HOW THE THING IS DONE AND CAN RETAIN YOUR PERSONALITY IN THE WORK DONE FOR YOU. WE CATER TO YOUR WHIMS AND PUT PERSONALITY INTO OUR WORK. MAIN 1678

CADILLAC
PRINTING
COMPANY



168 170 172 Larned St W Detroit



103 Portrait
Roman Kryzanowsky



Glaser's Cafe

Malkasten

NINETEEN BROADWAY
Basement

DOCUMENTS of value to which you require constant reference may be under lock and key and still available for instant use.

Have a PHOTOSTAT copy made and put the original in a Safe Deposit Vault.

Photostatic Reproductions are true to the original. They are made in a few moments at a very small cost and are clear and legible.

Reproductions made of Tracings, Blue Prints, Pen or Pencil Sketches, Maps, Legal Papers, or anything of this nature.

Drawing Materials of all Kinds, the odd things, things you don't find everywhere are here for your selection.

Service and Quality Assured.

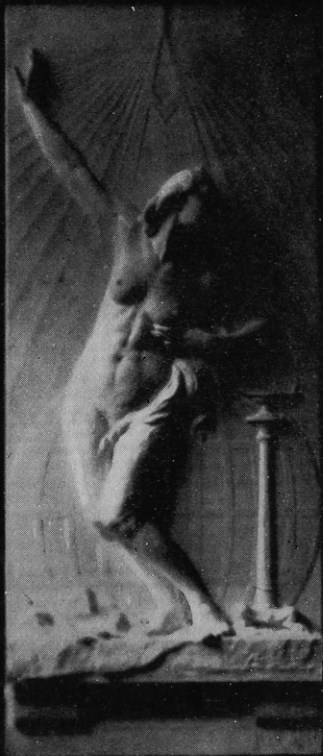
THE MULTI - COLOR CO.

CADILLAC 666

SPRINGFIELD BLDG., DETROIT



215 Bust of Marxhausen
Edward G. Wagner



148 A Lost Soul
Alfred F. Nygard

MULTIGRAPHING
FILLING - IN
ADDRESSING
ENCLOSING and SEALING

PUBLIC WORK
CLUB NOTICES
MONTHLY MAILING
LISTS

Quality Multigraphing Co.

216 New Telegraph Building
DETROIT, MICH.

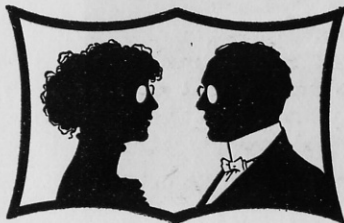


We give you real personal service on all your mailings.
CALL CHERRY 2211

PHILLIPS, WILCOX & KRUSE

PROFESSIONAL LANDSCAPE ARCHITECTS

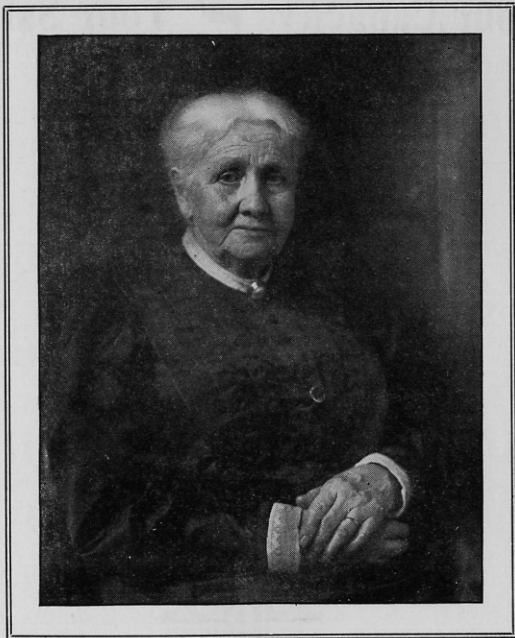
1601-2 KRESGE BUILDING



Albert W. Kludt
OPTICIAN

Specialist in Adapting
Lenses to the Sight
Difficult Cases Solicited

239 WOODWARD AVE.
Annis Fur Bldg. 2nd Floor



A photographic portrait of a personality will live with you when out of the room, out of town, out of the country, out of the world.

FRANK SCOTT CLARK
654 Woodward Avenue

Your Capacity ? Your Salary

ARE THEY EQUAL

Increase your earnings by increasing your earning capacity and efficiency.

Make yourself worth more to your boss.

Our complete and thorough training in the art of practical lettering and show-card writing enables you to enter this growing, fascinating, remunerative profession.

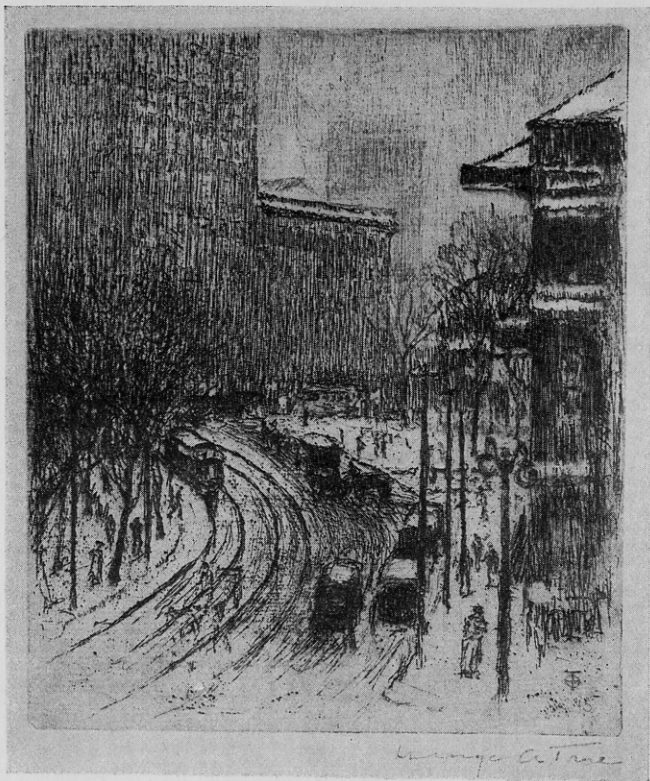
Write or call for particulars.

**PERSONAL, INDIVIDUAL ATTENTION
GIVEN EVERY STUDENT**

THE ORIGINAL SCHOOL



Detroit School of Lettering
OFFICES & SALESROOMS  82-84 GRISWOLD ST.
DETROIT MICH. U.S.A.



208 From the Scarabs' Window (etching)

George A. True

WILLIAM O'LEARY

... FINE ARTS ...

410 WOODWARD AVENUE



PAINTINGS
ETCHINGS
WATER COLORS
ENGRAVINGS
FACSIMILES
PICTURE FRAMING





72 Portrait of the Dutch Pianist, Jan Sicksz
Paul Honore



**The HOUSE of
FLOWERS**

SMALL THINGS

are what really "make" or mar a social function. Flowers are a matter of course; it is the care and taste with which they are selected which really matters.

For more than fifty years we have been lending our art and experience with flowers to Detroit society. Let us serve you also.

PHONE YOUR ORDER

MAIN 320


John Breitmeyer's Sons

"THE HOUSE OF FLOWERS"

26 - 28 Broadway

David Whitney Bldg.

719 Mack Ave.

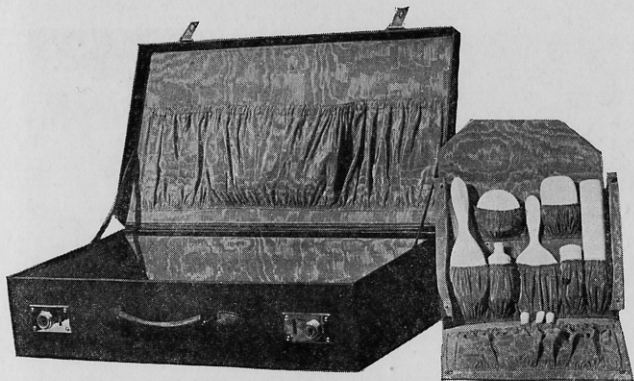




122 The Clouded Inscription

John A. Morse

“MICHIGAN’S GREATEST LEATHER STORES”



“Knowing how to travel is more than knowing time-tables.”

Visit Tuttle & Clark and learn how to travel and be at home.

Detroit’s Headquarters for Traveling Bags, Wardrobe Trunks, Fitted Luggage, Ladies’ Hand Bags and Leather Novelties.

SPECIALISTS IN GIFTS FOR
ALL OCCASIONS

TWO STORES

253
Wood-
ward,
Fisher
Arcade



Corner
Jeffer-
son
and
Bates



95 Portrait
Percy Ives



Dixie Land

645 Woodward Ave.

A RENDEZVOUS for old friends who like things *their* way. The little quiet corners where folks with thoughts akin may sit and eat and chatter.

The favorite spot for Artists, Actors, Musicians.

Ideal appointments for afternoon teas, where true southern hospitality abounds.



FRED W. RYPSAM

DESIGNING, DRAWING
PHOTO RETOUCHING
FOR COMMERCIAL PURPOSES

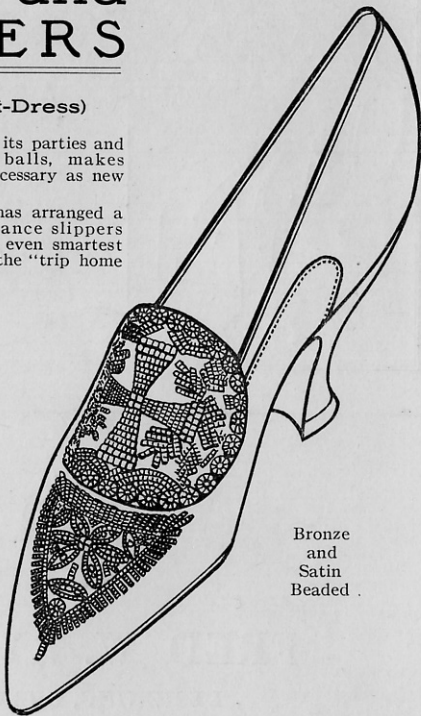
512 SCHERER BLDG.
CADILLAC 2670

BOOTS and SLIPPERS

(Dress and Semi-Dress)

The holiday season, with its parties and dances, and dinners and balls, makes fashionable new shoes as necessary as new clothes.

The Walk-Over Store has arranged a most inviting display of dance slippers and newest dress boots, and even smartest of street boots to wear on the "trip home over the holidays."



Bronze
and
Satin
Beaded .

The Walk-Over Shoe
Company

153
Woodward
Ave.

153
Woodward
Ave.



Baumgartner's

WE'VE BEEN in the clothing business more than twenty years—studying the business from every angle—always ready and eager to give the best values possible.

THIS ANSWERS every question regarding the quality of our clothing—and tells you why we feature **HIRSH-WICKWIRE CO. OVERCOATS AND SUITS.**

A **SPLENDID** showing at **Twenty-Five dollars.**

BAUMGARTNER'S

State and Griswold
Chamber of Commerce

Grand River and Washington
Stevens Building