

THE  
DETROIT INSTITUTE  
OF ARTS  
*of the*  
CITY OF DETROIT

Loan Exhibition

NOVEMBER

1920



SIR HENRY RAEBURN, R. A.  
*Dr. Alexander Lindsay, of Pinkieburn*

THE  
DETROIT INSTITUTE  
OF ARTS  
*of the*  
CITY OF DETROIT

Loan Exhibition of  
Paintings, Tapestries, Chinese Porcelains and  
Other Objects of Art

*From the Collections of*  
M. Knoedler & Co., P. W. French & Co.  
and Parrish Watson Co., of New York

NOVEMBER

1920

LIST OF PAINTINGS  
*Lent by M. Knoedler & Co.*

WILLIAM HOGARTH. 1697-1764

1 Gustave Viscount Boyne

SIR JOSHUA REYNOLDS, P. R. A. 1723-1792

2 Portrait of Miss Mary Townshend

THOMAS GAINSBOROUGH, R. A. 1727-1788

3 Portrait of Miss Elizabeth Tyler, of Bath

4 Going to Market

5 Woodland Scene

GEORGE ROMNEY. 1734-1802

6 Portrait of Mrs. Elizabeth Haythorne

7 Thomas Heron, of Chilham Castle, Kent.

8 Portrait of William Lushington

RICHARD COSWAY, R. A. 1742-1821

9 Lady Sheffield

FRANCISCO JOSÉ DE GOYA Y LUCIENTES.  
1746-1828

10 Portrait of the Marquesa de Bajamar

11 Portrait of Don Juan Camaron y Melia

SIR WILLIAM BEECHEY, R. A. 1753-1839

12 Portrait of Harriet, wife of Nathaniel Wells, Esq.

SIR HENRY RAEBURN, R. A. 1756-1823

13 Dr. Alexander Lindsey, of Pinkieburn

14 Anne Boswell, wife of Alexander Carre of Caverse

JOHN HOPPNER, R. A. 1758-1810

15 Portrait of Sir Soulden Lawrence

JOHN OPIE. 1761-1807

16 A Cornish Lad



JEAN BAPTISTE CAMILLE COROT

*Le Joueur de Flûte du Lac d' Albano*

- JOHN RUSSELL. 1745-1806
- 17 Portrait of George IV
- J. M. W. TURNER. 1775-1851
- 18 Landscape and Cattle
- JEAN BAPTISTE CAMILLE COROT. 1796-1875
- 19 Le Joueur de Flute du Lac d'Albano
- NARCISSE VIRGILE DIAZ DE LA PEÑA.  
1808-1876
- 20 Pool in the Woods
- THEODORE ROUSSEAU. 1812-1867
- 21 A Plain in Berri, Sunset
- JULES DUPRÉ. 1812-1889
- 22 Landscape
- CHARLES FRANCOIS DAUBIGNY. 1817-1878
- 23 On the River Oise
- WILLEM MARIS. 1839-1910
- 24 Cattle and Ducks

## TAPESTRIES AND OTHER OBJECTS OF ART

*Loaned by P. W. French & Co.*

### GOTHIC, XV CENTURY

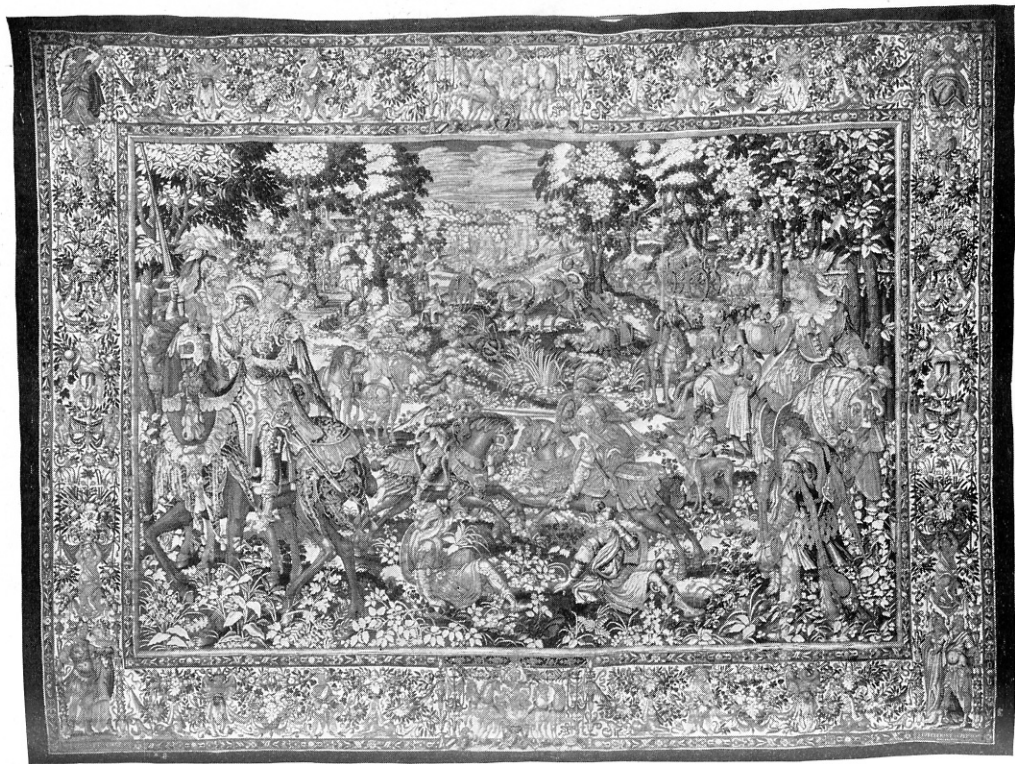
- 25 Mille Fleurs
- 25a The Passion and Triumph of the Redeemer

### FLEMISH RENAISSANCE, XVI CENTURY

- 26 The Continnence of Scipio  
After the cartoon by Giulio Romano
- 27 A Tournament Scene
- 28 Charles V and Isabella
- 28a The Triumph of David  
After the cartoon by Bernard Van Orley
- 28b The Burning of the Numidian Camp  
After the cartoon by Guilio Romano

### FLEMISH RENAISSANCE, XVII CENTURY

- 29 Vertumnus and Pomona  
From the Duke de Berwick and D'Albe Collection



XVI CENTURY FLEMISH RENAISSANCE TAPESTRY

*Tournament Scene*



XV CENTURY FRENCH MILLE FLEURS TAPESTRY



- 54 Walnut cassone, Italian, XVI Century
- 55 Gilded iron torcheres, Spanish, XVII Century
- 56 Pair of gilded silver and porphyry candlesticks, Italian,  
XVII Century

## OLD CHINESE PORCELAINS

*Lent by the Parrish-Watson Company of New York*

- 57 Oviform vase, Tzu Chou ware, Sung dynasty, 960-1279  
From the Adolphe Grosjean collection
- 58 Jar, Chun Yao, Yuan dynasty, 1280-1367
- 59 Baluster-shaped vase, Ming dynasty, 1368-1644

### KANG HSI PERIOD, 1662-1721

- 60 Kylin
- 61 Amphora-shaped vase  
From the collection of the late Henry Sampson, Esq.
- 62 Peachbloom rouge box  
From the collection of the late J. Pierpont Morgan, Esq.
- 63 Peachbloom rouge box  
From the collection of the late J. Pierpont Morgan, Esq.
- 64 Writer's water vessel, peachbloom glaze  
From the collection of the late Henry Sampson, Esq.
- 65 Peachbloom water vessel  
From the collection of the late Henry Sampson, Esq.
- 66 Semi-globular water vessel, peachbloom glaze  
From the collection of the late Henry Sampson, Esq.
- 67 Semi-globular water vessel, peachbloom glaze
- 68 Chrysanthemum bottle, peachbloom glaze  
From the collection of the late Henry Sampson, Esq.
- 69 Bottle-shaped vase, sang de boeuf glaze, known as Lang Yao  
From the collection of the late Henry Sampson, Esq.
- 69a Companion bottle-shaped vase
- 70 Miniature bottle-shaped vase, sang de boeuf glaze, known as  
Lang Yao  
From the collection of the late Henry Sampson, Esq.
- 71 Miniature beaker, crushed strawberry glaze, Lang Yao  
From the collection of the late Henry Sampson, Esq.
- 72 Miniature beaker, sang de boeuf glaze  
From the collection of the late Henry Sampson, Esq.



SPANISH WOOD CARVING, XV CENTURY

*Saint Catherine of Alexandria*

- 73 Bottle-shaped vase, apple-green glaze  
 74 Oviform jar, apple-green glaze  
 75 Oviform jar, apple-green glaze  
 76 Bottle-shaped vase, mottled powder blue glaze  
 77 Vase, coral glaze  
 78 Vase with broad mouth, apple-green glaze  
 79 Two wide-mouthed bowls, sang de boeuf glaze, Lang Yao  
 From the collection of George R. Davies, Esq.  
 80 Oviform vase, famille verte enamel colors  
 81 Pear-shaped vase, famille verte enamels  
 From the collection of the late Brayton Ives, Esq.  
 82 Bottle-shaped vase  
 83 Bottle-shaped vase, coral glaze  
 From the collection of the late Henry Sampson, Esq.  
 84 Baluster-shaped vase, sang de boeuf glaze, Lang Yao  
 85 Long-necked bottle, coral glaze  
 From the collection of George R. Davies, Esq.

#### CHIEN LUNG PERIOD, 1736-1795

- 86 Bottle-shaped vase, musard-yellow glaze  
 87 Globular bottle-shaped vase, turquoise glaze  
 88 Bottle-shaped vase, turquoise glaze  
 89 Pear-shaped vase, turquoise vase  
 90 Gourd-shaped vase, "mille fleur"  
 From the collection of the late General Brayton Ives  
 91 Bottle-shaped vase, turquoise glaze  
 91a Companion vase  
 92 Bottle-shaped vase, orange-peel glaze of rose du Barry  
 enamel  
 93 Oviform vase with trumpet-shaped neck, famille rose enamel  
 colors  
 From the collection of George R. Davies, Esq.  
 94 Damascus plate, XVI Century  
 95 Koubatcha plate, XVI Century  
 96 Rhodian plate, XVI Century  
 97 Rhodian plate, faience, XVI Century  
 98 Rhodian plate, faience, XVI Century



SANG DE BOEUF      FAMILLE VERTE      SANG DE BOEUF

*Chinese Porcelains of the Kang Hsi Period, 1662-1721*

- 99 Wood sculpture, Saint George and the Dragon, French, XV Century
- 100 Wood sculpture suggesting a Bodhisattwa, T'ang Dynasty, 618-906