

Annual Report Number

Bulletin of

**THE DETROIT INSTITUTE OF ARTS
OF THE CITY OF DETROIT**

**VOLUME . . . XXIV
NUMBER 4 . . . 1945**



PANTHER HOLDING A COAT OF ARMS
ITALIAN (ROME), FIFTEENTH CENTURY
Gift of Mr. and Mrs. Ernest Kanzler, 1944



GILT BRONZE BEAR, CHINESE, HAN DYNASTY, 206 B.C.-220 A.D.
Gift of K. T. Keller, 1944

THE ARTS COMMISSION ANNUAL REPORT FOR THE YEAR 1944

TO THE HONORABLE
THE COMMON COUNCIL OF THE CITY OF DETROIT

GENTLEMEN:

We take pleasure in transmitting the report of the Arts Commission for the year ending December 31, 1944.

GROWTH OF THE COLLECTIONS

Thanks to an unusual flow of gifts during the past year, the collection of paintings has been enriched in both American and European sections by a number of outstanding works. The high standard of the baroque gallery has been raised still higher by the addition of five masterpieces: an altarpiece by G. B. Tiepolo, from his last Spanish period; two charming child portraits of the last prince of Urbino by Federico Barocci; a brilliant work by Rubens representing Hygeia, executed entirely by the artist in his earlier period; and a superb male portrait of Van Dyck's English period. The Venetian Renaissance room, which contains great paintings by Giovanni Bellini, Titian and Tintoretto, has received a magnificent altarpiece by Paolo Veronese—an artist heretofore not represented in the collections. As examples of the earliest period of Italian painting, two small panels of the school of Giotto, painted in Florence about 1320, have been acquired from City appropriations. Displayed in the Gothic Hall, they give an excellent idea of the close connection between mural and panel painting during this period.

Of outstanding importance are two additions to the gallery of early Flemish and Dutch paintings: the imposing portrait of the Abbot Ingenray by Jan Gossaert called Mabuse, dated 1535, and an *Adoration of the Kings* by the first great Amsterdam painter, Jacob Cornelisz, painted a decade or so earlier.

The section of early American painting has been built up during the last

few years with special care. Two well authenticated portraits, one by Feke, the other by John Hesselius, have been added to the eighteenth century room, and two unusually charming works by Washington Allston (one purchased from City appropriation) to the gallery of Romantic painting. The growing interest in Detroit in advanced trends in contemporary art has permitted the acquisition of paintings by Walt Kuhn, Milton Avery, Marsden Hartley, Mark Tobey and Loren McIvor.

Our collection of early drawings and miniatures has been augmented in the Western field with the welcome gifts of drawings by Jacob van Ruisdael and Rubens.

Among the new additions to the Print Room a complete set of Durer's woodcuts, *The Little Passion*, and seven etchings by Goya, including a set of four from his "Proverbs," deserve first mention. Besides these there are a number of French and Flemish etchings of the seventeenth century (Jacques Callot, Crispin van de Passe) and two English mezzotints (William Doughty and John Jones).

It has always been our endeavor to represent the development of sculpture throughout the ages as completely as that of painting. An important step, therefore, towards this accomplishment—as far as the earliest periods of Near Eastern sculpture are concerned—was the acquisition of an impressive Sumerian statuette of a worshipper (c.2700 B.C.) and a fragment of an Assyrian relief from Nineveh (VII century B.C.). To the rich collection of Italian Renaissance sculpture we were able to add a late fifteenth century Madonna relief, carved in wood—a technique rather unusual in Florence—in the style of Leonardo Tossi, for which there is a terracotta sketch in the Berlin Museum, and a marble coat of arms bearing a panther, of excellent Roman workmanship of the same period. A remarkable wooden crucifix, somewhat less than life-size, of the sixteenth century, from Florence, poses the question of a possible connection with a lost crucifix by the young Michelangelo, to whose late style it seems related.

Our collection of modern American and European sculpture begins to take shape. A small terracotta portrait bust by W. T. Coffee of the early nineteenth century is the earliest in period of this year's acquisitions, then works of Thomas Ball and John Quincy Adams Ward, who are now as well represented, and the somewhat later Saint-Gaudens, whose portrait relief of Jules Bastien-LePage has been received as a gift. A large bronze by Carl Milles, *Sunbright*, gives a better representation of the master from Cranbrook, of whose work the museum thus far has owned only two smaller bronze groups (*Europe and the Bull* and *Folke Filbyter*). A fascinating plaster model by John Flannagan has been added to the museum's two fine works in stone by this artist.

One of the leading German sculptors of the pre-Hitler era, Gerhard Marcks, is now excellently represented by the gift of two bronze figures, a crouching and a standing nude, while another gift of a bronze by E. A. Bourdelle, *Woman in Prayer*, shows this remarkable French sculptor in a more serious mood than in the amusing group, *Woman with Goat*, which the museum acquired some years ago.

The one important sculpture added to the Far Eastern section is a splendid lacquered wood statue of a seated Arhat, of the early Tokyogawa period, one in a series of such figures, several of which are in the collections of other American museums.

The Department of Islamic Art has received gifts of importance: three Safavid miniatures by Aka Riza and Riza-i-Abbasi, an Isfahan rug, a Damascus goblet and textiles from Seljuk Persia and Moorish Spain.

The Textile Department has been enriched by many gifts and a few purchases. Two tapestries add their beauty to the Museum and the Alger House Branch. Several important silk fabrics were acquired from the exhibition which illustrated the evolution of silk weaving over a period of two thousand years. The presentation of this exhibition was the outstanding event in the activities of the textile department. A collection of costume accessories, acquired largely from the celebrated collection of Mrs. De Witt Clinton Cohen, New York, including purses, caps, baby garments and beadwork, appears to give especial pleasure to the visitors. The gift of a group of tapestry fragments, textiles and embroideries will keep alive the memory of a former patron to the department, Mrs. William Clay.

In the field of the decorative arts, significant additions have also been made during the year. Without diminishing the value of all the gifts and purchases, a number may be singled out for special mention as being noteworthy in themselves or filling gaps in the Museum's collections: an instructive series of ivory carvings from ancient Eskimo sites in Alaska; the Museum's first example of incised bone carving from Coptic Egypt, a fragment of the fourth or fifth century; a group of carved furniture panels of the fifteenth and sixteenth centuries, revealing the change in decorative style from Gothic to renaissance; a champeve enameled plaque from the arm of a cross, the Museum's third example of Italian enameling of the fourteenth century; notable additions by gift and purchase to the American, English and German furniture collections and in the two fields of glass and metalwork.

By purchase the Museum acquired its first examples of thirteenth century French Gothic stained glass, two lancets of typically rich coloring, which have been installed in the Romanesque Hall. The collection of glass—core-modeled, free blown, mould-blown and pressed—has been greatly augmented, particularly by the gift of a collection of ancient Roman, medieval Islamic, and modern American glass, in memory of the late Mrs. William Clay; by the purchase of an outstanding Roman mould-blown beaker with lotus-bud bosses; and by the gift of a fine example of Greco-Egyptian core-modeled glass of the sixth to fourth centuries B.C.

And finally attention is drawn to the strengthening of the Museum's collection of metalwork (appropriate in a city in which metal figures so largely in industry) by three fine Chinese bronzes, a bear of the Han Dynasty, and a pair of mask ring-handles of the Sui Dynasty; by two pieces of eighteenth century American silver, a porringer by James Turner and a mug by Paul Revere, both of Boston, given in memory of Mrs. William Clay; and a group of striking examples of German Baroque-Rococo silver.

EDUCATIONAL ACTIVITIES

1944 was a year of experimental new programs, of adjustment to special war conditions, of working under difficulties because the department was short handed, but over all of a very satisfactory growth in new forms of usefulness both through the schools and through a gratifying response to the new children's room.

The first installment of the Kahn fund was spent in transforming a study room into a children's room, called the Junior Museum Headquarters, with furniture, cupboards, celotex walls, and sink. This room was open four days a week during the summer. About 1500 visitors came. Some children were casual visitors to look at the special exhibits for children; some were mothers wishing advice on what to show their children in the museum; but many were children who stayed to take part in the activities of the room—to study, make scrapbooks, play games specially designed to acquaint children with the museum collections, etc.



SATURDAY IN THE JUNIOR MUSEUM HEADQUARTERS

The room is now open on Saturdays. In addition to the informal, individual activities which are the distinctive feature of the room there is a "slide program" at 1:30, an illustrated talk on subjects of special interest for children (for example, Paul Revere, Digging in Egypt, Chinese Dragons.) The accompanying photograph of Saturday in the Junior Museum Headquarters is typical of the children who come, varying greatly in race, background, and age.

The department operated with two instead of the normal three members during the year. As a result, since the children's activities were greatly increased, the number of lectures and gallery talks offered for adults had to be somewhat curtailed. However, the Wednesday evening lecture courses, Sunday gallery talks, talks on special exhibitions, and lectures courses at the Detroit Public Library were continued and met with an increased response. The department also increased its co-operation with such outside organizations as the Detroit Federation of Women's Clubs, the Program Planner's Institute, and the East West Committee of Detroit.

With the educational staff restored to normal size for 1945 we hope to make both the children's room and our adult programs increasingly effective in the coming year.

Public Lectures and gallery talks—	No.	Attendance
Educational Department	97	2305
Films	10	5525
Curators	39	1875
Talks for Special Adult Groups	52	2542

Childrens Activities	Afternoon Story Hours	66	400
	Junior Explorers Club	27	185
	Junior Museum Hdqtrs.	40	1800
	Film on Williamsburg	1	750
	Special Appointments	121	3311
	(including schools, universities, Girl Scouts, etc.)		

ATTENDANCE

The number of visitors to the main building of the Detroit Institute of Arts during the year 1944 reached a total of 448,368. Nearing the half-million mark, this is the largest attendance in any one year since 1928, when the building was first opened to the public. The increase of 158,000 visitors shows to what extent people patronize the activities of the cultural and recreational facilities of the art center in war time.

Grateful acknowledgment is made to the Founders Society for the many important items which have been added to the art collections during the year. The report of their activities, appended hereto, shows what a potent force the Founders Society is in the growth of the collections and the expanding influence of the Art Institute.

Respectfully yours
ARTS COMMISSION

EDGAR B. WHITCOMB

President

CLYDE H. BURROUGHS

Secretary

MRS. EDSSEL B. FORD

W. R. VALENTINER

Director

K. T. KELLER

ROBERT H. TANNAHILL

Commissioners

E. P. RICHARDSON

Assistant Director

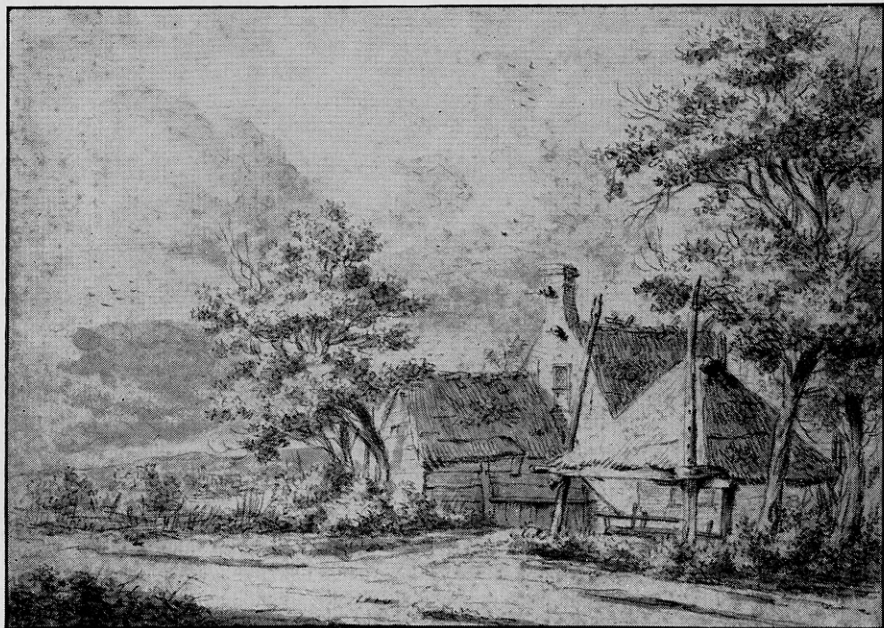
ANNUAL REPORT OF THE FOUNDERS SOCIETY

TO THE MEMBERS OF THE DETROIT MUSEUM OF ART FOUNDERS SOCIETY,
LADIES AND GENTLEMEN:

The Detroit Museum of Art Founders Society has during 1944 reached a new high in its sphere of usefulness. Not since the crisis of 1929 has it so fully carried out its expressed purpose of augmenting the collections. While the City of Detroit appropriated a net total of \$178,482.00, for the maintenance and operation of the Detroit Institute of Arts, the Detroit Museum of Art Founders Society has added objects valued at \$192,125.75, thus exceeding the City appropriation.

In the list of appended accessions which will accompany this report, it will be noted that every department of the Museum has been enriched. Among the paintings and sculpture which have been added to the collection are a number of outstanding masterpieces which accent the importance of our Museum. Some of these came as rich gifts from individual members, others were purchased by your Trustees from the funds of the Society. It will be gratifying to our members, as it is to the Museum staff, to witness this growth of the collection's in interest and importance.

A study of the report of the Treasurer shows total cash income for 1944 amounting to \$135,922.94, as compared to \$92,488.29 in the previous year. Of



LANDSCAPE, DRAWING, BY JACOB VAN RUISDAEL, DUTCH, 1629-1682
Gift of Fine Arts Associates, 1944

this, \$19,957.37 represents the income from invested funds, and the balance of \$115,965.57, comes from membership dues and contributions. Total disbursements for the year were \$123,059.82, the larger part of which was used for the purchase of art objects.

In the face of diminishing returns your Finance Committee has through a carefully studied program of broad and diversified investments maintained a good rate of income for these times, amounting to upwards of four per cent.

The Women's Committee was continued during the year under the leadership of Mrs. Edgar R. Thom, Chairman, and Mrs. Trent McMath, Vice-Chairman. This committee has performed a valuable service in holding the interest of our members through the entertainment which they have provided for the opening receptions of the more important exhibitions. The Members' Nights in connection with the Thorne Miniature Rooms and the reception and opening view of the Michigan Artists Exhibition brought out a much larger participation on the part of our members than on previous occasions. This growing interest is a healthy condition which is reflected in the returns in our membership department. We have had 260 new names added to our membership rolls this year as against 80 during the previous year.

By virtue of their gifts amounting to more than \$10,000.00, Mr. and Mrs. Walter O. Briggs, Mr. and Mrs. Henry Reichhold, and Richard H. Webber, have been enrolled as Benefactors. By virtue of gifts exceeding \$5,000.00, Hans Arnhold has been enrolled as a Fellow, and by virtue of their gifts of more than \$1,000.00 the Marquise Helie de Talleyrand and Lou R. Maxon have been enrolled as Governing Life Members.

At the Annual Meeting of the Corporation held on January 21, 1944, D. M. Ferry, Jr., and Griffith Ogden Ellis were re-elected to succeed themselves as Trustees for the term ending 1947, and Miss Sarah M. Sheridan was re-appointed as a Trustee by Mayor Jeffries for the same period.

At the Trustees Meeting following the Annual Meeting, officers were elected as follows: D. M. Ferry, Jr., President, Mrs. Lillian Henkel Haass, Vice-President, Dr. George Kamperman, Treasurer, Clyde H. Burroughs, Secretary.

The term of existence of our Corporation will expire on April 17, 1945. The members of the Corporation have every reason to look back over the span of sixty years with pride and satisfaction. When Detroit was a mere hamlet a group of influential citizens initiated the cultural program in Detroit in 1885. In the intervening years many men and women worked unselfishly that the growth of the Museum's influence might keep pace with the growth of the City, and it was their forethought that planned the present center of Arts and letters by acquiring through public subscription the valuable site where our new building now stands.

Since 1919, when the Detroit Museum of Art turned over their substantial resources to be administered by the Detroit Institute of Arts, the parent organization, now called the Founders Society, has continued as a potent force in making the Detroit Institute of Arts what it is today. In addition to the large and comprehensive collection formed in earlier years, which represents every phase of the arts, it has through its Membership Funds and the income from its endowments and from the gifts of its individual members greatly enlarged the Museum's collections, contributing the larger part of its present outstanding masterpieces.

The Founders Society is an eligible register of those who have proven their substantial interest in the Art Institute, and it is from this register that the mayors in 25 years of City operation have generally made their appointments to the Arts Commission.

In view of its sphere of usefulness as the alter ego of the Detroit Institute of Arts, your Trustees recommend that the life of the Corporation of the Detroit Museum of Art be continued.

Respectfully yours
BOARD OF TRUSTEES

DEXTER M. FERRY, JR.,
President

CLYDE H. BURROUGHS
Secretary

ACCESSIONS

JANUARY 1, 1944 to DECEMBER 31, 1944

PAINTINGS

The Agony in the Garden and Pilate Washing his Hands, School of Giotto, Florence, Italian, c: 1350, City Appropriation.

Portrait of a Young Man, by Francesco Salviati, Italian, Florence, 1510-1563. Gift of Schonemann Galleries, New York.

The Mystic Marriage of St. Catherine, by Paolo Veronese, Italian, Venice, 1528-1588. Gift of Mr. and Mrs. Walter O. Briggs.

Two Portraits of Federico, Prince of Urbino, as a Child, by Federico Baroccio, Italian, Urbino, 1526-1612. Gift of Robert H. Tannahill.

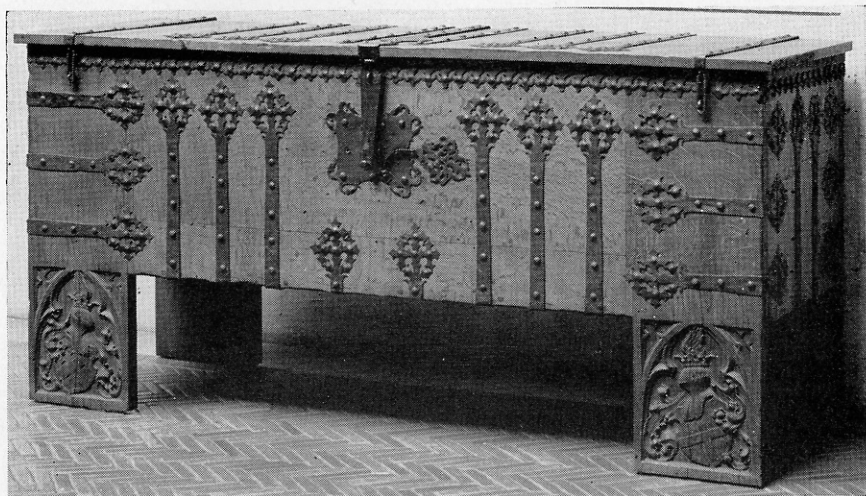
The Adoration of the Shepherds, by Luca Giordano, Italian, Neapolitan School, 1632-1705. Founders Society, General Membership Fund.



SAN FRANCISCO STREET, BY MARK TOBEY, AMERICAN, 1890-
Gift of the Founders Society, 1944

- St. Joseph and the Christ Child*, by Giovanni Battista Tiepolo, Italian, Venice, 1696-1770. Gift of Mr. and Mrs. Edgar B. Whitcomb.
- The Flight Into Egypt*, by Guiseppe Bazzani, Italian, c. 1690-1769. Gift of Jacob Heimann, New York.
- The Legend of St. Christopher*, by Jan Joest van Calcar, Dutch, Haarlem, 1460-1519. Founders Society, Membership Funds.
- The Adoration of the Kings*, by Jacob Cornelisz, Dutch, Amsterdam, c. 1470-1533. Founders Society, Ralph H. Booth Fund.
- Portrait of Abbot Ingenray*, by Jan Gossaert (called Mabuse), Flemish, Middleburg, Utrecht, c.1475-1536, Founders Society.
- Portrait of a Man*, by Anthonis Mor, Dutch, Utrecht, 1519-1576/7. Gift of Nicholas M. Acquavella, New York.

- The Hunt*, by Pieter de Hooch, Dutch, 1629-1684. Anonymous gift.
- Portrait of a Man*, by Gerard Terborch, Dutch, 1617-1681. Gift of Richard H. Webber.
- Hygeia, Goddess of Health*, by Peter Paul Rubens, Flemish, 1577-1640. Gift of Mr. and Mrs. Henry Reichhold.
- Portrait of an English Gentleman*, by Anton Van Dyck, Flemish, Antwerp, London, 1599-1641. Gift of Mr. and Mrs. Edgar B. Whitcomb.
- Portrait of Master Hartley*, by George Romney, English, 1734-1802. Anonymous gift.
- The Bather*, by H. S. Tuke, English, XIX Century. Gift of C. Edmund Delbos.
- Study in Four Colors*, by Fernand Leger, French, 1881-. Gift of John S. Newberry.
- Liegen, (Lying Down)*, by Paul Klee, German, 1879-. Gift of Miss Edith Ferry.
- In the Forest* by Heinrich Campendonk, German, 1889-. Gift of Robert H. Tannahill.
- Portrait of Mrs. Josiah Martin*, by Robert Feke, American, 1705-1750. Gift of Dexter M. Ferry, Jr.
- Portrait of Thomas Chamberlaine*, by John Hesselius, American, 1728-1778. Gift of Dexter M. Ferry, Jr.
- The Flight of Florimel*, by Washington Allston, American, 1779-1843. City appropriation.
- Log Jam, Penobscot Bay*, by Marsden Hartley, American, 1877-1943. Gift of Robert H. Tannahill.
- Italian Shepherd Boy*, by Washington Allston, American, 1779-1843. Gift of Dexter M. Ferry, Jr.
- Mallards*, by Walt Kuhn, American, 1880-. Founders Society, Merrill Fund.
- Joey*, by Walt Kuhn, American, 1880-. Founders Society, Merrill Fund.
- Freight Yards*, by Milton Avery, American, 1893-. Founders Society, Membership Funds.
- Salome with the Head of John the Baptist*, after Luini, by Frederick E. Cohen, American, ab.1810-1860. Gift of Edmund M. Sloman.
- Self-Portrait*, by Leopold Seyffert, American contemporary. Gift of Mrs. Standish Backus.
- The Drunkard's Plight*, by Robert S. Duncanson, American, 1821-1871. Gift of Miss Sarah M. Sheridan.
- Portrait of Edwin Markham, Poet*, by Merton Clivette, American, 1864-1931. Gift of Carl F. Clarke.
- San Francisco Street*, by Mark Tobey, American, 1890-. Founders Society, Membership Funds.
- Pickman-Derby House, 70 Washington Street, Salem, Massachusetts*, artist unknown, XIX Century. Founders Society, Gibbs-Williams Fund.
- Jungletown*, by Loren MacIver, American, 1909-. Gift of John S. Newberry.
- Rose of Sharon*, by Arnold Friedman, American, 1879-. Gift of a group of friends, Jewish Community Center.
- The Art Class*, by Zubel Kachadoorian, American contemporary. Gift of Robert H. Tannahill.
- Street Corner*, by Calvin Albert, American contemporary. Gift of Mrs. Lillian Henkel Haass.
- By the Light of the Stars*, by Richard Yonkers, American contemporary. Gift of John S. Newberry.



OAK CHEST, SOUTH GERMAN, XV CENTURY
Gift of Robert H. Tannahill, 1944

- A Young Man Contemplating a Flower*, signed: Aka Riza. Persian, XVI Century. Gift of Mrs. Edsel B. Ford.
- Lady Day-dreaming*, by Riza-i-Abbasi, Persian, XVII Century. Gift of Mrs. Edsel B. Ford.
- Officer of the Guards of Shah Abbas I*, by Riza-i-Abbasi, Persian, XVII Century. Gift of Mrs. Edsel B. Ford.
- Mongol Peasant*, Chinese, XIX Century. Gift of James B. Giern.

SCULPTURE

- Figure of a Man*, Sumerian, c.2700 B.C. Founders Society, Sarah Bacon Hill Fund.
- Man Leading Horses*, Assyrian, Nineveh, VII Century, B.C. Gift of Mrs. Lillian Henkel Haass.
- Corner Capital*, Sandstone, Alsace, Romanesque, XI Century. Gift of Arnold Seligmann Rey and Company, Inc., New York.
- Madonna and Child*, Tondo, wood, Florentine, XV Century. Gift of Mr. and Mrs. Ernest Kanzler.
- Panther Holding a Coat-of-Arms*, Marble, Italian, Roman, XV Century. Gift of Mr. and Mrs. Ernest Kanzler.
- Crucifix*, Italian, Florence, XVI Century. Gift of Mr. and Mrs. E. Raymond Field.
- Figure of a Woman*, carved oak, Flemish or English, XVI Century. Gift of Robert H. Tannahill.
- Arbat*, Japanese, late XVIII Century, Early Tokugawa Period. Gift of Mr. and Mrs. Edgar B. Whitcomb.
- Bust of a Man*, by W. T. Coffee, American, 1795-1827. Gift of Robert H. Tannahill.
- Portrait of Jules Bastien-Lepage, Poet*, by Saint-Gaudens, Augustus, American, 1848-1907. Gift of Carl F. Clarke.
- Woman at Prayer*, by Emile Antoine Bourdelle, French, 1861-1929. Gift of Mrs. Albert Kahn in memory of her husband, Albert Kahn.

- Aphrodite*, bronze, life-size by Rudolph Evans, contemporary, American. Gift of Clarence Woolley.
- Ruth*, by Grace Berdan, plaster, American, contemporary. Gift of Mrs. David B. Werbe.
- Sunglitter*, bronze, by Carl Milles, American, contemporary. Gift of George G. Booth.
- Elephant*, plaster, by John B. Flannagan, American, 1898-1942. Gift of Robert H. Tannahill.
- Standing Nude*, by Gerhardt Marcks, German, contemporary. Gift of Robert H. Tannahill.
- Seated Nude*, by Gerhardt Marcks, German, contemporary. Gift of Robert H. Tannahill.
- Two Masks*, Italian, stone, XVII-XVIII Century. Gift of Mrs. Albert Kahn.
- Coat-of-Arms*, Spanish, stone, XVI Century. Gift of Mrs. Albert Kahn.

TEXTILES

- Isfahan Rug, Persian, XVII Century. Gift of Richard H. Webber.
- Tapestry, *David and Bathsheba*, Flemish XVI Century. Gift of Richard H. Webber.
- Tapestry, *Scene from a Romance*, French, Beauvais, late XVII Century. Gift of K. T. Keller.
- Tapestry, two border fragments, *The Prodigal Son*, Flemish, XVII Century. Gift of Mrs. Ernest Kanzler, in memory of Mrs. William Clay.
- Tapestry, two fragments, Flemish, XVII Century. Gift of Robert H. Tannahill, in memory of Mrs. William Clay.
- Floral brocade panel, English, Spitalsfield, XVIII Century. Gift of Robert H. Tannahill, in memory of Mrs. William Clay.
- Brocaded satin panel with parrots, French, Lyons, c. 1750. Gift of Adolph Loewi.
- Two-tone damask, French, Lyons, early XVIII Century. Octavia W. Bates Fund.
- Bedsread, gold brocade, French, XVIII Century. Gift of Mrs. Ernest Kanzler, in memory of Mrs. William Clay.
- Man's waistcoat, all parts woven in one piece, uncut. French, possibly Alsace, XVIII Century. Octavia W. Bates Fund.
- Silk cloth, Hispano-Moresque, XIV Century. Gift of K. T. Keller.
- Cashmere wool shawl, Indian, XVIII Century. Gift of Robert H. Tannahill.
- Prayermat of printed cotton, Indian, XVIII Century. Gift of Robert H. Tannahill.
- Damask, Chinoiserie pattern, Italian, XVIII Century. Gift of Adolph Loewi.
- Silk twill, *The Falconer*, Persian, Seljuk, XII-XIII Century. Founders Society, Membership Funds.
- Silk brocade, border, Persian, XVIII Century. Gift of Mrs. Ernest Kanzler.
- Fragment of embroidered mantle, Peruvian, Paracas, before 500 A.D. Gift of Robert H. Tannahill.
- Lady's dress with accessories, American, XIX Century. Gift of Miss Allen Armstrong.
- Four woven grass mats. Indians of North America, Aleut. Alaska, before 1700. Gift of Mrs. Lillian Henkel Haass.
- 14 necklaces and 2 arm bands, beadwork, African, XIX Century. Gift of J. Lawrence Buell.
- 3 bracelets of copper wire, African, XIX Century. Gift of J. Lawrence Buell.

- Embroidered satin frieze, Chinese, XIX Century. Gift of Mrs. Thomas H. Stephens.
- Embroidered pincushion, English, XVIII Century. Gift of Mrs. Ernest Kanzler, in memory of Mrs. William Clay.
- Handkerchief, English, about 1850. Gift of Mrs. Ernest Kanzler in memory of Mrs. William Clay.
- Handkerchief, French, XVIII Century. Gift of Mrs. Ernest Kanzler in memory of Mrs. William Clay.
- Lace fan, French, XIX Century. Gift of Mrs. Newton Annis.
- Alms Bag, French, XVIII Century. Octavia W. Bates Fund.
- Baby shirt, bib and cap. Knitted and beaded, French, XVIII Century. William C. Yawkey Fund.
- Sampler, Guatemala, dated 1850. Gift of Mrs. Ernest Kanzler, in memory of Mrs. William Clay.
- Embroidered valance, Italian, XVII Century. Gift of Mrs. Ernest Kanzler, in memory of Mrs. William Clay.
- Needlepoint panel, probably a dorsal. Italian, XVII Century. Gift of Robert H. Tannahill, in memory of Mrs. William Clay.
- Embroidered panel, probably a dorsal, Italian, XVIII Century. Gift of Robert H. Tannahill, in memory of Mrs. William Clay.
- Man's cap, embroidered, Italian, XVIII Century. Octavia W. Bates Fund.
- Baby's embroidered swaddling band, Italian, XVII Century. William C. Yawkey Fund.
- Woman's bodice piece, embroidered, Italian, XVIII Century. William C. Yawkey Fund.
- A set of boxes containing Venetian glass beads. The boxes probably French. Gift of Mr. and Mrs. DeWitt Clinton Cohen.
- Silk handkerchief, Malta, XIX Century. Gift of Dr. W. W. Kahn, in memory of Mrs. Pauline M. Kahn.

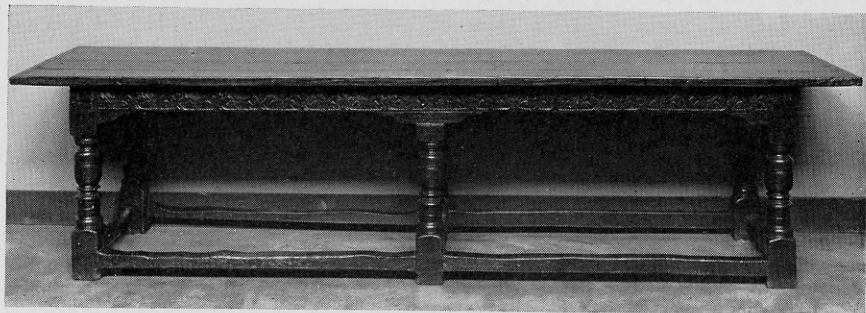
DRAWINGS AND PRINTS

- Woodcuts, set of 36, *The Little Passion*, by Albrecht Durer, German, 1471-1528. Gift of Mr. and Mrs. William Comstock.
- Engravings, set of the *Four Temperaments*, by Crispin van de Passe, Dutch, c. 1565-1637. Founders Society, Hal H. Smith Fund.
- Engravings, set of the *Ten Periods of Life*, by Crispin van de Passe, Dutch, c. 1566-1637. Founders Society, Hal H. Smith Fund.
- Etching, *Aquellos Polbus*, by Francisco de Goya, Spanish, 1746-1828. Founders Society, Hal H. Smith Fund.
- Etching, *Nobubo Remedio*, by Francisco de Goya, Spanish, 1746-1828. Founders Society, Hal H. Smith Fund.
- Etchings, set of four from the *Proverbs*, by Francisco de Goya, Spanish, 1746-1828. Founders Society, Hal H. Smith Fund.
- Etchings, *Le Grand Niais*, by Francisco de Goya, Spanish, 1746-1828. Founders Society, Elliott T. Slocum Fund.
- Etchings, set of fourteen from the *Life of the Virgin*, by Jean Jacques Callot, French, 1594-1635. Founders Society, Elliott T. Slocum Fund.
- Mezzotint, *Portrait of Admiral Keppel*, by William Doughty, English, -1782. Founders Society, Charles L. Freer Fund.
- Mezzotint, *Portrait of Edmund Burke*, by John Jones, English, c. 1745-1797. Founders Society, Elizabeth P. Kirby Fund.

- Lithograph, *Portrait of Daniel Webster*, artist unknown, American, XIX Century. Bequest of Grace W. Biddle.
- Etching, *Tarantelle*, by Stanley William Hayter, English contemporary. Gift of John S. Newberry.
- Drawing, pen and ink, *Two Angels*, by Peter Paul Rubens, Flemish, 1577-1540. Gift of Bishop John Torok, Pittsburgh.
- Drawing, *Landscape*, by Jacob van Ruisdael, Dutch, 1628-1682. Gift of Fine Arts Associates, New York.
- Drawing, *Two Angels*, Italian, XVI Century. Gift of Robert H. Tannahill.
- Drawing, pen and ink, *Figure Drawing for King Arthur*, by Aubrey Vincent Beardsley, English, 1872-1898.
- Drawing, *Italian Landscape*, by Muirhead Bone, English, contemporary. Gift of C. Edmund Delbos.
- Drawing, crayon, *Elephants*, by George Luks, American, 1867-1933. Founders Society, Elizabeth P. Kirby Fund.
- Drawing, *Steel Mill*, by G. L. Terna, American. Gift of Hal H. Smith.

DECORATIVE ARTS

- Arms and Armor, five spears, three clubs, three daggers, two axes, and a bow and arrow, East African, XIX-XX Century. Gift of J. Lawrence Buell.
- Carvings, Spoon, bone, African, XIX Century. Gift of J. Lawrence Buell.
- Carvings, Fragment of a plaque with incised head of a man, bone, Coptic (Alexandria?), IV-V Century. Gift of Piero Tozzi, New York.
- Carvings, six furniture panels with reliefs in Gothic and Renaissance styles, oak, French, XV-XVI Century. Gift of Robert H. Tannahill.
- Carvings, oval picture frame, wood, Italian or French, XVII Century. Gift of Robert H. Tannahill.
- Carvings, oval picture frame, wood, Italian or French, XVII Century. Gift of Robert H. Tannahill.
- Carvings, archer's wrist-guard, seven harpoon heads, and five implements, walrus ivory, North American Indian (Eskimo, Alaska), Prehistoric to XX Century. Gift of Mrs. Lillian Henkel Haass.
- Carvings, Oval mortar, stone, North American Indian (Southwestern United States), XVII-XVIII Century. Gift of Dr. F. M. Barker.
- Ceramics, pair of bowls, porcellaneous ware, Chinese, Ching Dynasty, XIX Century. Gift of K. T. Keller.
- Ceramics, two albarelli, a jar, and a wine jug, majolica, Italian (Palermo), XVII-XVIII Century. Gift of Mrs. Albert Kahn.
- Ceramics, bowl on foot, red-glazed Arretine ware, Roman (Arezzo), I Century. Gift of Mrs. Lillian Henkel Haass.
- Ceramics, tile with coat-of-arms, glazed earthenware, Spanish XVII Century. Gift of Mrs. Albert Kahn.
- Enamels, circular plaque with allegorical female figure, inscribed DE OCCASION SVIS, grisaille painted enamel on copper, French, XVI Century. Gift of Robert H. Tannahill.
- Enamels, oval plaque with figure of saint, inscribed SANCTE MATHIAS, polychrome painted enamel on copper, French, XVI Century. Gift of Robert H. Tannahill.
- Enamels, vase with polychrome abstract pattern, painted enamel on copper, by Jean Dunand, French (Paris), 1877-. Gift of Robert H. Tannahill.



OAK TABLE, ENGLISH, JACOBEOAN, XVII CENTURY

Gift of Robert H. Tannahill, 1944

- Enamels, plaque from the arm of a cross, decorated with five heads and an angel, champleve enamel on copper, Italian (Siena ?), XIV Century. Gift of Robert H. Tannahill.
- Furniture, console table, carved mahogany with marble top, American (Queen Anne Style), first quarter XVIII Century. Founders Society, Gibbs-William Fund.
- Furniture, wing chair, carved and turned mahogany, upholstered in printed linen, American (Queen Anne Style), First half XVIII Century. Founders Society, Gibbs-Williams Fund.
- Furniture, baluster-back armchair, carved and turned wood with splint seat, American. XVIII Century. Gift of Robert H. Tannahill.
- Furniture, long-case clock, carved mahogany, by Frederick Maus, American (Philadelphia), active 1785-93. Founders Society, Gibbs-Williams Fund.
- Furniture, dining table, carved and turned oak, English (Jacobean Style), XVII Century. Gift of Robert H. Tannahill.
- Furniture, mirror with carved and gilded wood frame, English (William and Mary Style), about 1695. Gift of the Marquise de Talleyrand.
- Furniture, chest, oak with wrought iron trim in Gothic Style, German, XV Century. Gift of Robert H. Tannahill.
- Furniture, chest, oak veneered and inlaid, inscribed with names of woodworkers and date, and also: SIMON ACKER HOLM VON CHRISTIANSTAD IN SCHWEEN Fi F 29 May 1751, German, XVIII Century (1751). Anonymous gift.
- Glass, collection of twenty pieces of glass, comprising five bowls, three dishes, two creamers, two pitchers, a pair of salts, a pair of candlesticks, an inkwell, a flip glass, a covered sugarbowl, and a covered compote, American (New England, New York and Ohio). First half XIX Century. Gift of Mrs. Edsel B. Ford, Mrs. Ernest Kanzler, and Robert H. Tannahill, in memory of Mrs. William Clay.
- Glass, amphora, dark blue glass with bands and chevron pattern of blue-green and yellow, Egyptian (under Greek influence), VI-IV Century B.C. Gift of Mrs. Lillian Henkel Haass.
- Glass, bowl polychrome millefiori glass, Roman (Egypt), I Century B.C. Gift of Mrs. Edsel B. Ford, Mrs. Ernest Kanzler, and Robert H. Tannahill, in memory of Mrs. William Clay.

- Glass, beaker, mould-blown with lotus-bud bosses, Roman (Syria?), I-III Century. Founders Society, Laura H. Murphy Fund.
- Glass, group of three glass vessels, a pale brown oil flask, a pale olive-green bottle with blue-green trail and pincer decoration, a pale green mould-blown hexagonal bottle, Roman (Syria), I-IV Century. Gift of Mrs. Edsel B. Ford, Mrs. Ernest Kanzler, and Robert H. Tannahill, in memory of Mrs. William Clay.
- Glass, goblet, enameled and gilded, Syrian (Damascus), XIV Century. Gift of Mrs. Edsel B. Ford, Mrs. Ernest Kanzler, and Robert H. Tannahill, in memory of Mrs. William Clay.
- Stained Glass, three-panel lancet window, *Scenes from the Lives of St. Peter and St. Paul*, French, XIII Century. Founders Society, Membership Funds.
- Stained glass, four-panel lancet window, *Scenes from the Life of St. John Chryso-stom*, French, XIII Century. Founders Society, Membership Funds.
- Metalwork, porringer, about 1740-1750, by James Turner, American (Boston), died 1759. Gift of Robert H. Tannahill, in memory of Mrs. William Clay.
- Metalwork, mug, about 1780, by Paul Revere, American (Boston), 1735-1818. Gift of Robert H. Tannahill, in memory of Mrs. William Clay.
- Metalwork, bear, gilt bronze, Chinese, Han Dynasty, 206 B.C.-220 A.D. Gift of K. T. Keller.
- Metalwork, pair of ring-handles in the form of masks, bronze, Chinese, Sui Dynasty, 589-618 A.D. Gift of K. T. Keller.
- Metalwork, watch, made by James Woodgrove, with silver case, English (London), 1795-96. Also chain and locket-key. Gift of Mr. and Mrs. E. Raymond Field.
- Metalwork mortar bronze, Flemish or German, XV Century. Gift of Mrs. Edsel B. Ford.
- Metalwork, two plates, embossed and stamped brass, Flemish or German, XV Century.
- Metalwork, tatting shuttle, cut steel, French, XVIII Century. Founders Society, William C. Yawkey Fund.
- Metalwork, covered vase, silver gilt, by Nathanael Schlaubitz, German (Danzig), active 1690-1726. Founders Society, Membership Funds.
- Metalwork, covered tankard, silver gilt, by Tobias Kramer, German (Augsburg), 1582-1634. Founders Society, Membership Funds.
- Metalwork, travelling table set, silver gilt, by Johann Leonhart Allmann, active 1733-1775, and Johan Georg Herkomer, active 1712-1754. German (Augsburg), XVIII Century. Founders Society, Membership Funds.
- Metalwork, knife and fork, steel blades, handles covered with beadwork, Italian, XVII Century. Founders Society, Octavia W. Bates Fund.
- Metalwork, brooch in form of a raven, silver, North American Indian (Tlingit, Alaska), Early XX Century. Gift of Mrs. Lillian Henkel Haass.
- Manuscript page from an Ethiopic Psalter, vellum, Abyssinian, VII Century. Gift of Fred A. Perine.
- Two musical instruments, zanze and horn, East African, XIX-XX Century. Gift of J. Lawrence Buell.
- Moneychangers scales and weights in carved wood box, German, 1612. Gift of Robert H. Tannahill.
- Boxes containing beads and needles for beadwork (sable), Italian, Early XIX Century. Gift of Mr. and Mrs. DeWitt Clinton Cohen, New York.
- Two coiled baskets, North American Indian (California), Late XIX Century. Gift of Mrs. Wanda Henry Worth, San Francisco.